

# Yōkoso! Ishinomaki



ISHINOMAKI Tourist Guide Book



Welcome to Ishinomaki Station

ようこそ石巻駅へ

笑顔咲かす  
伊達を旅  
仙台・宮城



Welcome to  
**ISHINOMAKI**

The city of the Ocean, Manga and Delicious Food



## MANGATTAN LINER

The Senseki Line that runs between JR Sendai Aoba-dori Station & ISHINOMAKI Station has the Mangattan Liner, a special train decorated with characters created by SHOTARO ISHINOMORI (Cyborg 009, Kamen Rider, etc). In 2022, the Senseki-Tohoku Line added two new trains, bringing the number of these special trains to three.



Every Sunday  
Aoba-dori (dep 10:48)  
⇒ Ishinomaki (arr 12:14)

※ On arrival at ISHINOMAKI Station,  
you will get a 'Boarding  
Commemorative Certificate'  
※ Train schedules are subject to  
unnotified change

Senseki Mangattan Liner | ©Ishimori Pro.  
Photo: Kanta Takakawa  
©Ishimori Pro





Kamen Rider1  
Cyborg009&  
003&001

**START!**

The Manga Road (1km) starts from Ishinomaki Station and leads to the Ishinomori Manga Museum. Look for the Ishinomori character statues on your way!


Website here!



**ISHINOMAKI MANGAROAD**

**ISHINOMAKI**

There are street maps dotted along the streets



© ISHIMORI PRODUCTION  
© ISHIMORI PRODUCTION / TOEI CO., LTD.  
© ISHIMORI PRODUCTION / MACHIZUKURI MANBOW



# 石森萬画館

ISHINOMAKI MANGATTAN MUSEUM

MANGA CITY ISHINOMAKI'S MANGATTAN ISLAND (NAKAZE AREA)

IN CENTRAL ISHINOMAKI IS A MUST VISIT!



A museum for Manga (Japanese Comic) artist Shotaro Ishinomori who created Gygorg 009, Kamen (Masked) Rider etc. The museum has rare original paintings, exhibitions and attractions such as 3D reproductions of Ishinomori's work and screenings of original animation etc. You will definitely enjoy the world of manga, limited only by your imagination. You can read 6,000 manga books or watch 300 films for free at the Manga Anime Studio! Open Workshops that anybody can join are also held every day.

© ISHIMORI PRODUCTION  
© ISHIMORI PRODUCTION • TOEI CO., LTD.  
© ISHIMORI PRODUCTION / MACHIZUKURI RAINBOW

## MANGA • ANIME STUDIO



Experience the world  
of Manga artists!

CONTACT

ISHINOMORI MANGA MUSEUM  
2-7 Nakaze Ishinomaki  
TEL.0225-96-5055

<https://www.mangattan.jp/manga/>  
OPEN 9:00~17:00 Closed on Tuesdays

Access  
12mins walk from JR Ishinomaki Station  
Sanriku Expressway  
10mins from Ishinomaki Kanan Exit (11)  
※Use Kawamachi multi-story car park



Website  
here!

# Miyagi Sant Juan Bautista Museum



Tsunenaga Hasekura  
(enacted at San Juan City Museum)



Description of a large size illustration about the engineering process behind the sailing vessel.



A globe which illustrates the 16th century world map titled 'Konyobankokuzenzu'.



A relief sculpture recreating Hasekura's audience with the Roman Pope.

## New Voyages Ahead

The Miyagi prefecture Keicho Missionary Museum (San Juan Museum) is a scientific museum that tells the history of 400 years ago when the Western-style wooden sailing vessel, the Sant Juan Bautista, departed from Ishinomaki to set sail on the Keicho Diplomatic Mission and the culture of sailing vessels.

The Sant Juan Park outside the museum has a playground and plenty of open space for children to play and locals to relax. It is a famous spot for sunsets with its elevated view of the Pacific Ocean. Feel free to use this space as a rest spot during your trip!

VIEW POINT

NEARBY

Tsukinoura where the Keicho Envoy set sail

This is where the mission started their journey towards Europe. The hilltop has a great view of the blue ocean with an observation deck, a stone slab showing the sailing route and a statue of Tsunenaga Hasekura made by the sculptor Churyo Saito who was born in Miyagi Prefecture.



Miyagi Sant Juan Bautista Museum

OPEN:  
9:30~16:30  
※ Last entry is 30mins prior closing time  
※ Museum open until 17:30 on August  
CLOSED:  
Tuesday (If holiday, closed the following day)  
New Year (12/28 ~ 1/4)

Ishinomaki Sant Juan Bautista Park

Free entry  
OPEN: 9am~9pm  
※ Parking lot hours  
Open every day all year

Access: Train/take Ishinomaki Line from Ishinomaki Station to Watanoha Station, 25mins walk or 5mins by taxi

Car/From Sanriku Expressway Ishinomaki Kanan Exit (11) via Magiyama Tunnel (30mins)

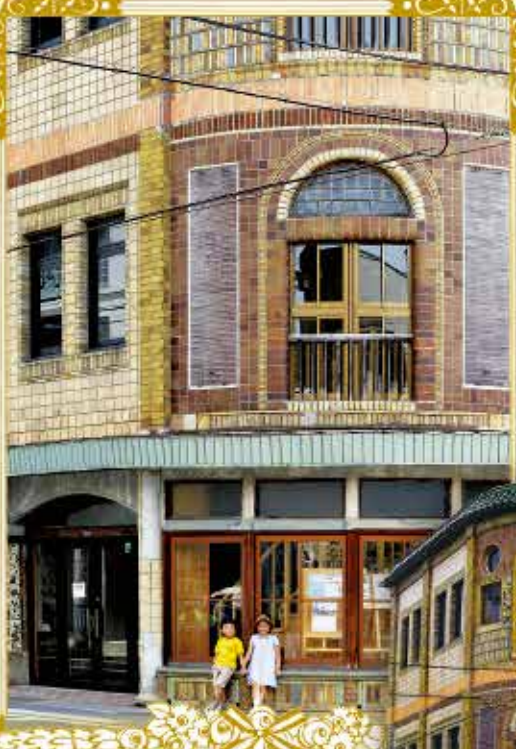
Address: 30-2 Watanoha-aza-omori Ishinomaki  
Phone: Sant Juan Museum 0225-24-2210  
<https://www.santjuan.or.jp/>  
Ishinomaki City Tourism Division 0225-95-1111

website  
here!



MAP P56-P6

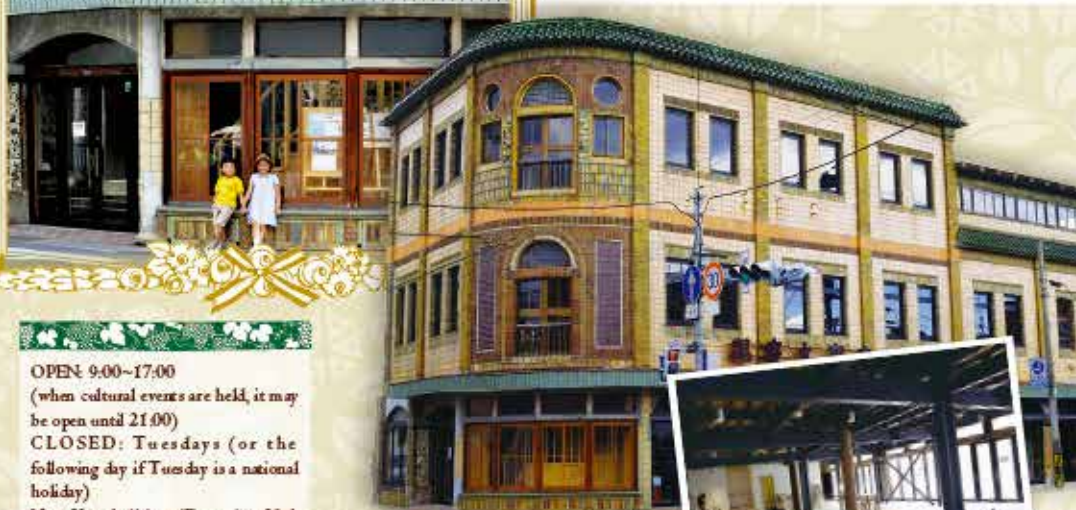




Designated Ishinomaki cultural property

# KANKEIMARU

Kankeimaru Shoten "KANKEIMARU" was built as the first department store in Ishinomaki. It continued to be loved by the citizens as a pottery & ceramic shop for over 90 years. While being built of wood, the outer walls are covered with assorted Spanish and other tiles, and the round and arched windows remind us of European architecture. This is a particular characteristic of the building. It is known as a symbol of prosperity of the port city Ishinomaki.



OPEN: 9:00~17:00  
(when cultural events are held, it may be open until 21:00)  
CLOSED: Tuesdays (or the following day if Tuesday is a national holiday)  
New Year holidays (December 29th ~ January 3rd)  
Entrance: free (cultural events may require an entrance fee)

Address: 3-6-9 Chuo, Ishinomaki  
Access: 10mins walk from JR Ishinomaki Station (no parking)  
Phone: Former Kankeimaru Store 0225-94-0191  
info@kankeimaru.jp

MAP P54-F1



Website here!



Used as an exhibition hall or rental gallery for displays on Ishinomaki history & culture

## Kankeimaru Exhibits



Tiles from the entrance pillars



Tiles from the outside wall



Arched front window



Relief tiles from the former cafeteria



Pamphlets available all over the city

# Magiyama Shimin no Mori

The super roller slide and big panorama observatory are highly recommended! After messing around, enjoy outdoor activities such as BBQ or campfire!



Big panorama observatory



Lots of outdoor climbing apparatus



Fun sledding slope for kids



BBQ house and the cookery area

- Facilities using fire (BBQ house & campfire etc) require advance reservation
  - Pots, hotplates & grills available to borrow: ask at office [no charge to use]
- CLOSED: Dec 29th ~ Jan 3rd



Super roller slide that goes through the woods. It's fenced in at high spots, so it's safe for kids!

Enquiries:  
Magiyama Shimin no Mori Office  
0225-93-9702

MAP P55-D3

# Maruhon MakiArt Terrace

Maruhon MakiArt Terrace is a cultural center that contains both the Ishinomaki Center for Arts & Culture and the Ishinomaki City Museum. The museum's permanent exhibit is a must see for Ishinomaki visitors! It has easy to follow explanations and materials of Ishinomaki's history and important people, including the sculptures of Eikichi Takahashi, introduced in the column. If you visit this facility alongside the Miyagi Tsunami Memorial Museum, you'll gain a holistic and deep understanding of Ishinomaki City

The strikingly unique building itself is a work of art designed by world-famous Japanese architect Sou Fujimoto



Maruhon MakiArt Terrace Ishinomaki Cultural Facility  
Address: 〒985-0032  
Kasai 1-8, Ishinomaki City, Miyagi Pref  
Phone: 0225-98-5630 FAX: 0225-98-5640  
E-mail: info@makiart.jp

OPEN 9:00~22:00  
CLOSED: Mondays (or the following day if Mon. falls on a holiday) and New Years (12/28 to 1/4)

MAP P57-D-6

## Ishinomaki arts and culture center

Ishinomaki City Museum  
Phone: 0225-98-4831  
OPEN: 9:00~17:00  
CLOSED: Mondays (or the following day if Mon. falls on a holiday) and New Years (12/28 to 1/4)  
Entrance Fee: Permanent Exhibit Adult - 300 JPY  
High school student - 200 JPY  
Elementary / JHS students - 100 JPY (20% discount for groups of 20 or more people)  
When there is a special exhibit, the special exhibit fee also grants entry to the permanent exhibit



## A look into Ishinomaki art

### A Sculpture Miraculously Recovered from the Tsunami

Many of Eikichi's works were being held or displayed at the Ishinomaki Cultural Center until the Great East Japan Earthquake. The facility was close to the ocean and consequently sustained extensive damage from the tsunami. Eikichi's works were also damaged, but were recovered thanks to the support of locals and art enthusiasts from across the country.



Takahashi Eikichi 1911-1982

Born in 1911 in Ishinomaki. Studied at Ishinomaki SHS, then the Tokyo Fine Arts School (now the Tokyo University of the Arts). Eikichi was recognized as an up-and-coming sculptor and his works were displayed in the Shinbunshin (now Japan Fine Arts Exhibition). Drafted into the Pacific War, he was sent to Guadalcanal Island where he died at the young age of 31.

### Masterpiece "Sound of Waves"

A bearded fisherman stands atop a ship being blown strongly by the ocean winds. This figure captures the fortitude and determination of people who live on the seas. To the people of Ishinomaki, who lived through the 2011 tsunami, it seems like an encouraging message from Eikichi, boldly declaring "Despite it all, I still choose to live with the sea."



### "Mother and Child"

Carved after Eikichi got married and had a daughter. This happy period in his life ended abruptly with the arrival of draft papers. Forced to leave behind his beloved wife and daughter to head to a battlefield with no guarantee he would survive to return home—this was the reality facing Eikichi when he took up his chisel to carve out something to leave behind. The result was this carving, "Mother and Child," which depicts the preciousness of life and love between parents and children.



# Ishinomaki Fish Market

At 875.47m long, this is the longest fish market in the world. It sustained extensive damage in the 2011 tsunami, but reopened in 2015 as a cutting-edge fish market. Welcoming fishing vessels from all across the country, Ishinomaki is now the gateway to the sea. Over 200 different species of fish are landed here annually. Students of all ages as well as tourists can apply for group tours guided by an employee.

## ○ Observation hours

- Weekdays and Saturday from 6am to 5pm
- ※ Closed on Sundays and holidays
- Parking: Fish market North Parking Lot - 200 cars
- West Parking Lot - 13 buses

## ○ What you can observe

- There are viewing corridors on the 2nd floor of the fish market that overlook the wholesale area. From the display in the Observer's Hall, you can see records of the building and auctions.
- ※ Early in the morning (between 6am and 8am), you may be able to observe the fish market in operation. Due to hygiene regulation, visitors normally cannot enter the wholesale and unloading areas. Fish and seafood are also not sold directly to visitors at the market.

Contact : Ishinomaki Fish Market  
Sakanamachi 2-14, Ishinomaki City  
☎0225-96-1021 MAP P56-D6



Website here!



# HIYORIYAMA PARK

This is one of the major historical places that haiku poet Matsuo Basho visited.

Because of its location as an excellent vantage point to see the progress of construction work on the memorial park area that was most badly damaged by the tsunami, Hiyoriyama Park has become a mecca for people to visit to get an idea of how reconstruction here is progressing.



You may get an idea of what Basho himself saw?!

- Parking : 27 cars + 2 buses
- Access : Train/20mins walk from JR Ishinomaki Station
- Car/20mins from Sanriku Expressway Ishinomaki Kanan Exit(11)

Contact :  
Ishinomaki City Tourism Division  
☎0225-95-1111

MAP P55-D3



Through the torii gateway on the south side of the park you can get views of the Pacific Ocean, while the northern side affords views of the city around the Kitakami River

Website here!



# Minamihama Marina

In order to prevent boats moored in the river from being washed into the city in the event of a tsunami, a public marina was built to harbor and maintain small boats. Besides helping secure the city's safety, the marina is expected to become a tourist attraction offering leisurely activities on the ocean.

Closed: Wednesdays (the next day if Wed is a holiday)  
New Year (from December 29th to January 3rd)

Contact: Minamihama Marina Office  
(Nomura Motors Co.)  
Minamihamacho 1-142-1, Ishinomaki City  
☎0225-25-5357



Website here!

# ISHINOMAKI AREA SEASIDE RIDE

THE LOCAL CITIZENS LET CYCLISTS USE CAFES, RESTAURANTS AND BATHING FACILITIES TO REST AND RELAX IN, MEANING THAT CYCLISTS CAN ENJOY SIGHTSEEING IN THE AREA



CHECK THE MAPS AT THE END OF THE BOOKLET FOR CYCLE STATIONS

## CYCLE STATION

Cycle station services

- |                                   |                   |
|-----------------------------------|-------------------|
| Places to rest                    | Cycling equipment |
| Bicycle pumps                     | Bicycle stands    |
| Water                             | Restrooms*        |
| Info (sightseeing・cycling course) | Wi-fi*            |

\*Some services not available depending on location



Website here!





# Recommended travel methods

## Japan Car Sharing Association



Car rental available to people supporting the rejuvenation of Tohoku at a special price! Also, as part of a plan to support tourism in the Oshika, Ogatsu & Kitakami areas, you can use the 'local support rent-a-car'.

OPEN: 9:00~18:00 CLOSED: mid-August, New Year Parking:none  
 Fee: light vehicle 24hrs ¥5,500~ (regular price, excl. tax)  
 standard vehicle 24hrs ¥7,500~ (regular price, excl. tax)  
 ※Minimum rental: 6 hours

Phone : 0225-22-1453

Address : 1-5-23 Ekimae Kitadori, Ishinomaki MAP P56 C-3

<https://www.japan-csa.org/>

## Taxi Companies

Ishinomaki Kanko Taxi	P56 E-3	0225-95-2311
Kogyoko Taxi	P55 C-3	0225-23-2323
Toho Taxi	P54 C-3	0225-22-5101
Miyagi Kotsu	P55 D-3	0225-22-4121
Ishinomaki Taxi	P55 C-3	0225-22-3165
Taxi Pumpkin	P55 C-3	0225-96-6626
Marugo Taxi	P55 C-3	0120-05-7661
Hibari Taxi	P55 C-3	0225-22-5240
Miyagi Kanko Co., Ltd.	P55 D-3	0225-22-9245
Sanriku Taxi	P55 D-3	0225-93-3321
Kitakami Taxi	P55 C-3	0120-45-6311
Kaneto Taxi	P56 E-4	0225-24-0117
Ishinomaki Kotsu	P55 C-3	0120-250-274
Tohoku Kotsu	P54 E-5	0225-22-1622
Koyo Taxi	P55 C-3	0120-95-8662
Kanomata Taxi	P57 D-5	0225-74-2005
Maeyachi Taxi	P57 B-4	0225-72-3078
Monou Transport Co.	P57 C-3	0225-76-2205
Tatamiishi Kanko Taxi	P57 C-5	0225-73-3488
Fuji Taxi	P58 E-4	0225-62-3059
Ogatsu Taxi	P58 E-4	0225-57-2020
Matsuyama Kanko Taxi	P58 E-4	0225-62-2131
Yamatake Taxi	P58 E-5	0225-62-3088

## Bicycles for rental



P54 B-2 Ishinomaki Tourist Information Center (Ishinomaki City Hall 1F)

P56 E-4 Sant Juan Park  
 P54 F-5 Kawamachi Community Center  
 P54 E-2 Ishinomaki Grand Hotel  
 P59 B-3 Kitakami Tourist Produce Center  
 P57 D-4 Kawanokami Hyappiyokan  
 P57 D-4 Jobon no Sato Road Station

Rental : 1h ¥500 (tax incl.)  
 max ¥3,000 (tax incl.)  
 Included helmet and repair kit



Check the map at the end of the book for bicycle rental stations



More details & booking

Ishinomaki Area Tourism Promotion Organization

PHONE: 0225-98-8285

<https://www.umimachi-sanpo.com/>

# Ishinomaki Manhole Collection



Sailing Ship Manhole  
MAP P56 D-4



Mogube the Mole and  
Kaupa the Kappa Manhole  
MAP P55 D-4



Ishinomaki Kawabiraki  
Festival Manhole  
MAP P53 B-2, C-2



Pokémon Manhole  
MAP P53 B-2

Supported by



© 2023 Pokémon. © 1996-2023 Nintendo/Game Freak, TM. All Rights Reserved.

Let's look for it!!



Robocon Manhole  
MAP P53 D-3  
© ISHIMORI PRODUCTION



Saitaro-kun Manhole  
MAP P55 D-4

Lots of unique manholes around the city!!  
 Try making your own stone rubbing copies!





JAPAN SELECTED  
日本遺産  
みちのく  
GOLD  
道と金  
道と金

# Kinkasan Island

Kinkasan is one of the most famous sacred islands in eastern Japan. The deer and monkeys there are considered to be 'messengers of the gods,' and all wild animals are venerated. Because it is a sacred island, not only hunting but also the cutting down of trees has long been forbidden, so there are some very old beech and zelkova trees there.

On July 29th, 2022 the journey from Sendai to Kinkasan, the 'Kinkasan Road', and the 'Kinkasan Pilgrimage' were designated as cultural properties and added to Japan Heritage's "The Story of Michinoku Gold"

## Big three traditional festivals

Check the event calendar on P49~52 for more details



Hatsumi Festival



Ruyjō Festival, Dragon Dance of Dedication



Shinroku Tsunokiri Festival (deer antler cutting)

## Access

[Enquiries for schedules of ships from Ayukawa port to Kinkasan]

Regular ship (up to 70 people)

Every Sunday: depart Ayukawa at 10:30, depart Kinkasan at 12:30

¥ 2,500/person roundtrip required time: 20mins

Smaller boat (up to 12 people ¥ 15,000 charter fee)

※ Price subject to change according to duration of stay

Requires advanced reservation, please contact to book

Kinkasan Passage Business Cooperative

0225-44-1850



Website here!



## Koganeyama Shrine

Koganeyama Shrine on Kinkasan Island was built about 1250 years ago. People have been coming since olden times to pray to the God of Wealth and Production here. The god is also known as the God of Luck & Prosperity, and it is said that if you come and pray here for 3 consecutive years, you will have no money troubles for the rest of your life

Kinkasan Koganeyama shrine  
5 Kinkasan Ayukawa-hama Ishinomaki  
0225-45-2301

MAP P60 D-4



There are many trees over several hundred years old on the road approaching the main shrine



The carving on the main shrine is amazingly beautiful, a testament to the skills of the engravers of the age

A large lantern several meters high. The upper left photo gives a good idea of its size



Sacred zelkova tree over 800 years old

POINT



You can hang out with deer on Kinkasan Island  
※ Even though deer are used to people, please be careful when feeding them etc.

We sometimes feel cranky, so be nice to us!



# Tashirojima Island

It takes 50mins to get to Tashirojima Island from central Ishinomaki.

Tashirojima Island is also called Cat Island because of the many cats living there. There are two villages on the island, Odomari and Nitoda.

There are also camp sites and lodging facilities. It's a great place to enjoy fishing and other outdoor activities



## Access

[To wharf] See info for Ajishima Island

[Wharf to Tashirojima Island]

50mins on the Ajishima Line (¥1,250 one way)

Ishinomaki Community Promotion Section

0225-95-1111

Ajishima Line

0225-93-6125

Website here!



## Cat Shrine

The Neko (cat) Shrine dedicated to cats is a result of the main local industry of fishing. The islanders would judge the size and quality of the catch according to the behavior of the cats, and the cats came to be venerated and deified

## PICK UP



Check out our pamphlet right miaow!



## MANGA Island MAP P60 A-4

This accommodation facility has 5 lodges, all cat-themed, some cat-shaped and designed by famous manga artists Michiko Satonaka and Tetsuya Chiba.

The lodges are fully furnished with classic characters and images of cats drawn by both artists inside the lodges

**OPEN:** APRIL-OCTOBER ※RESERVATION REQUIRED

**Fee:** Shima lodge/Shiro lodge (up to 5 people)...¥9,160/night  
Neko lodge/Dora lodge/Mike lodge (up to 6 people)

...¥8,140/night

Tent site (1 plot, up to 4 people).....¥1,520/night

**CLOSED:** varies depending on the season

**Parking:** none

**Tel:** Ishinomaki City Tourism Division 0225-95-1111

MANGA Island office(OPEN Apr-Oct) 0225-21-4141



# Ajishima Island

MAP P60-B5

Ajishima Island, with its cycling routes & fishing spots and so on can be enjoyed all year round. It's especially popular in summer, when many tourists come to see Aji Shirahama Beach, which has some of the clearest water in the whole of north Japan

## Aji Shirahama Beach MAP P60-B5

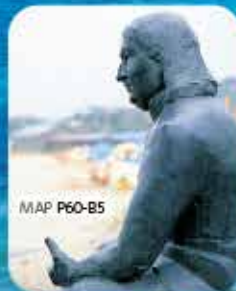
This beach on the western side of the island boasts crystalline emerald green shallows and pure white sand. It has some of the clearest waters in the whole of Tohoku



MAP P60-C5

### Dowameki Cape (viewed from the sea)

A recommended spot at the southernmost point of the island giving gorgeous views of the Pacific Ocean. The shapes of the rocks, weathered by years of wind and water, are also well worth checking



MAP P60-B5

### Statue of Bering

Bering is the famous Danish explorer for whom the Bering Strait is named. The statue was erected by the islanders to commemorate Bering visiting the island while on the voyage in which he discovered the Bering Strait.



Website here!

#### Access

##### [To wharf]

**Train** Kodonowaki wharf.  
Miyako Bus from JR Ishinomaki Station  
Yamashita Kodonowaki Line, 10mins ride  
Get off at Kodonowaki 2-chome

**Chuo wharf.**  
Miyako Bus from JR Ishinomaki Station  
Yamashita Kodonowaki Line, 5 mins ride  
Get off at Chuo 1-chome

**Car** 20 mins from Sanriku Expressway Ishinomaki Kanan Exit(11)

##### [Wharf to Ajishima Island]

60mins on Ajishima Line

(¥1,360 one way)

(¥1,470 one way from Futawatashi Port)

[Wharf to Ajishima Island from Ayukawa Port]

15-30mins departing from Ayukawa port via Ajishima Line

(One way ¥470)

Ishinomaki Oshika Branch Office Community Promotion Section  
0225-45-2114



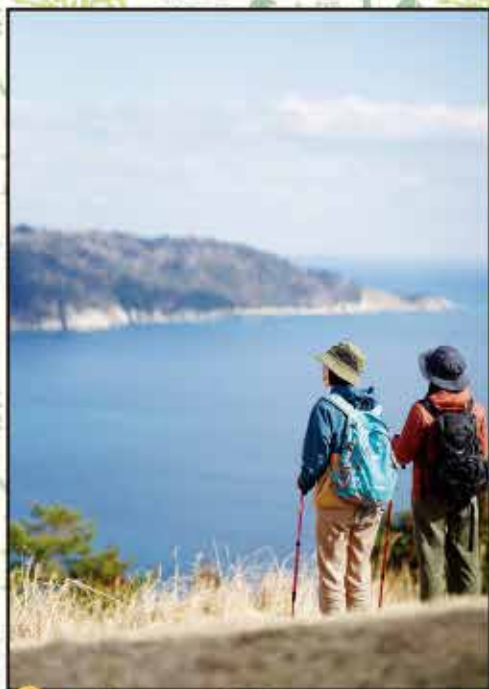
# Michinoku Coastal Trail

The Michinoku Coastal Trail is a long trail spanning 1,000km (164.2km in Ishinomaki plus 36km of ferry travel) from Kabushima in Hachinohe, Aomori to Matsukawaura in Soma, Fukushima. Along the trail are countless stories of nature and lives intertwined with the forests, villages, rivers, and oceans of Tohoku. This trail aims to connect these stories and lives with the future, with the hopes that both locals and visitors from afar can walk together along the path of Tohoku's recovery.



Ishinomaki • Kawa no Visitor Center  
☎0225-24-6506  
Oshika Peninsula Visitor Center  
☎0225-24-6912

Website here!



## Ishinomaki's Gourmet Delights

Enjoy the finest seafood, caught in the Sanriku Kinkasan Offshore Fishing Ground, one of the three best in the world



### Mackerel Stock Ramen

A specialty of Ishinomaki, this noodle dish is served in a delicious stock made from mackerel caught in the Ishinomaki area and has a flavorful yet light taste (restaurant info→P27, P39)



### Ishinomaki Deluxe Kinka Sushi

If you want to sample the best of what the Sanriku Kinkasan Offshore Fishing Ground has to offer, sushi is the way to go! We use a selection of the freshest seafood landed here at Ishinomaki



### Hoya Zoni

This regional cuisine is a soup made with broth extracted from hoyo, a local seafood delicacy. Depending on where you have it, the broth ingredients may also include goby fish, sea eel, octopus, abalone, or shellfish



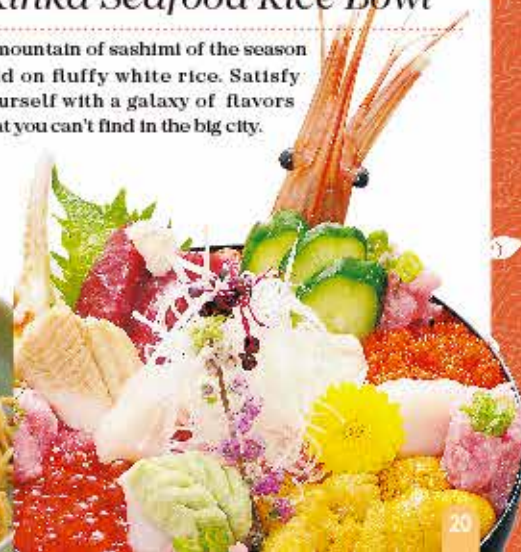
### Ishinomaki Yakisoba (Japanese fried noodles)

Ishinomaki yakisoba proved popular in a Japanese fast food competition. The noodles are fried in a tasty fish stock, Ishinomaki-style. The more you eat, the more you get the flavors of the sea, and you'll be hooked!

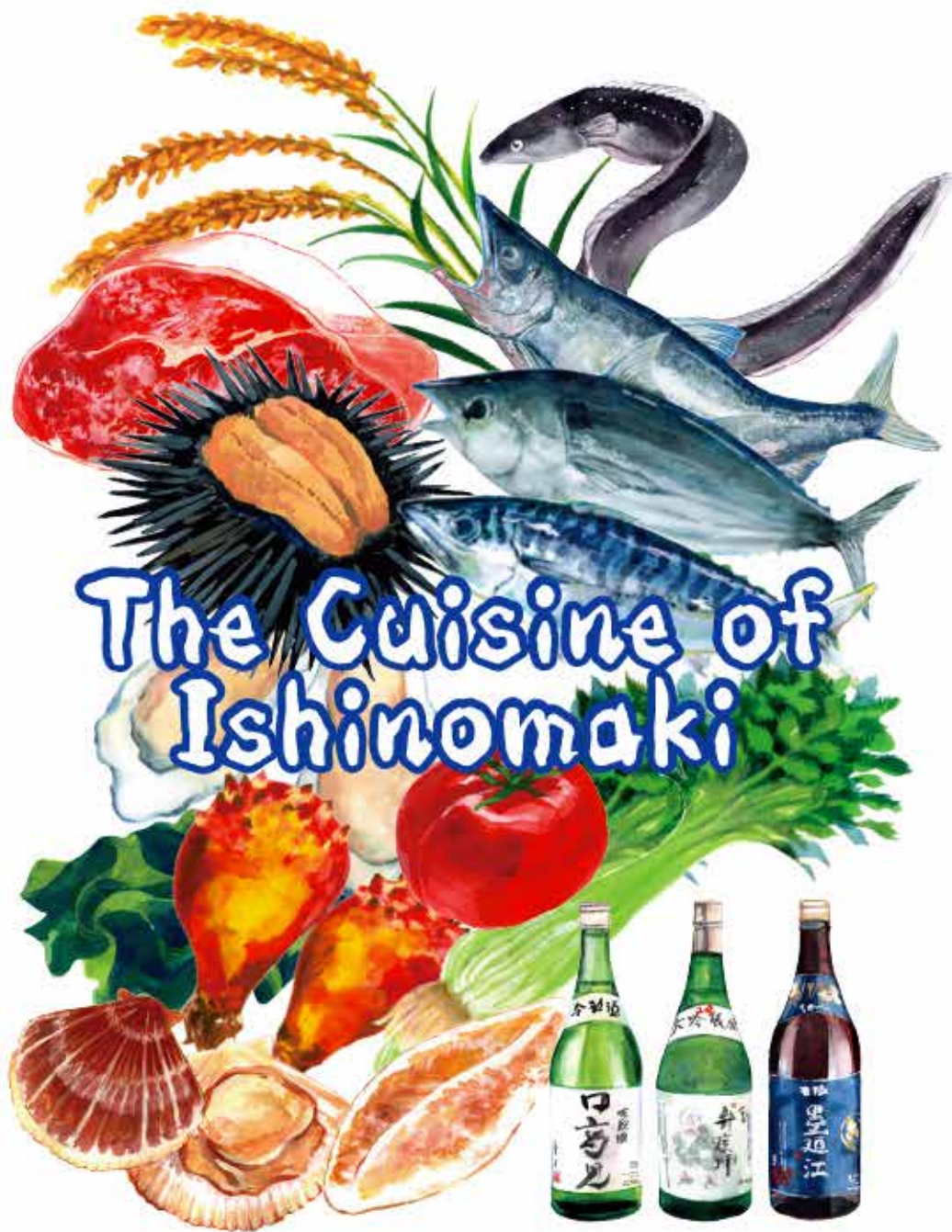


### Ishinomaki Premium Kinka Seafood Rice Bowl

A mountain of sashimi of the season laid on fluffy white rice. Satisfy yourself with a galaxy of flavors that you can't find in the big city.







# The Cuisine of Ishinomaki

Ishinomaki is a treasure trove of delicious ingredients. Especially the seafood from the Sanriku Kinkasan Offshore Fishing Ground known as one of the top 3 in the world, expert chefs use those ingredients to create magic in the kitchen.

## Restaurant Recommendations for Ishinomaki



### Central Ishinomaki

Ajisai Shin'ya	Japanese	P53 D-3
2-5-45 Tachimachi Ishinomaki		0225-93-5515
Ajimichi Ippei	sushi, Japanese	P53 D-4
2-1-9 Tachimachi Ishinomaki		0225-22-2672
Atelier Raiandoa	sweets	P55 C-3
1-5-2 Izumicho Ishinomaki		0225-22-2135
Al-ché-ciano	Western	P53 D-6
2-5-5 Tachimachi Ishinomaki		0225-25-6603
Awano Kamaboko Store	retail store	P53 D-6
1-9-11 Chuo Ishinomaki		0225-96-1232
Izakaya Rokumonsen	Japanese	P53 D-4
2-3-10 Tachimachi Ishinomaki		0225-93-3100
Izakaya Waki AiAi	izakaya	P53 C-2
3-19 Iseba Ishinomaki		0225-96-9545
Izakaya Soba Restaurant Tenkuan	izakaya	P53 D-3
1-6-8 Tachimachi Ishinomaki		0225-25-6446
Ishinomaki Genki Ichiba	retail store, restaurant	P54 F-5
2-11-11 Chuo Ishinomaki		0225-98-5539
Teppan WHITE	izakaya	P53 A-1
Social Building 1F 16-8 Kokuchu Ishinomaki		0225-25-5569
Tempura Nagomi	Japanese	P53 C-2
Ohashi Building 2F 3-6 Iseba Ishinomaki		0225-25-5612
One Drink Bar Komachi	izakaya	P54 E-4
2-2-6 Chuo Ishinomaki		090-2973-3052
Unagi Kappo Yahataya	Japanese	P54 E-4
2-8-23 Chuo Ishinomaki		0225-22-0138
Restaurant Shochiku	sushi, Japanese	P54 E-5
2-7-23 Chuo Ishinomaki		0225-96-4896

Asahien Tea Shop	retail store	P55 D-3
10-8 Asahicho Ishinomaki		0225-22-2887
Kashi no Sanpei	sweets	P55 C-3
1-4-26 Ekimae kitadori Ishinomaki		0225-22-0635
Kazamidori	sweets	P55 D-3
1-22-26 Hiyorigaoka Ishinomaki		0225-94-5714
Kappo Stall Matsubaru	Japanese	P53 C-4
1-5-23 Haguro Ishinomaki		0225-98-8125
Kappo Takikawa	Japanese	P54 E-5
1-13-13 Chuo Ishinomaki		0225-22-1138
Cafe Ren	cafe	P53 C-3
2-7-26 Tachimachi Ishinomaki		070-1141-5238
Seasonal Food Bozu	Japanese	P53 D-5
1-6-7 Chuo Ishinomaki		0225-93-0902
Keishoan	Japanese banquet	P55 C-3
3-1-12 Izumicho Ishinomaki		0225-95-3399
Casual Restaurant Funaya	Japanese	P53 C-3
1-22 Kokuchu Ishinomaki		0225-95-6492
Seafood Toriko	Japanese	P54 F-3
2-5-13 Chuo Ishinomaki		0225-93-2727
Seasonal Food Imamura	restaurant	P54 E-5
2-7-2 Chuo Ishinomaki		0225-90-3739
Shimazu Koji Store	retail store	P54 F-1
3-24 Asahicho Ishinomaki		0225-22-1708
Seafood Cuisine Tomofukumaru	Japanese	P54 E-5
1-15-8 Chuo Ishinomaki		0225-22-2851
Janome Sushi	sushi, Japanese	P53 D-5
1-6-7 Chuo Ishinomaki		0225-22-6676
Restaurant Umifune	izakaya	P53 E-5
2-1-23 Chuo Ishinomaki		0225-25-5996
Bar Sakura	izakaya	P55 D-3
1-10-36 Kaihoku Ishinomaki		0225-94-8515
Fresh Izakaya Goku	izakaya	P53 D-3
2-5-41 Tachimachi Ishinomaki		0225-23-5821
Shiraken Kamaboko Shop	retail store	P53 D-3
2-4-29 Tachimachi Ishinomaki		0225-22-1842
Sukeroku Sushi	sushi	P53 D-4
1-3-7 Tachimachi Ishinomaki		0225-95-5208
Sushi Horai	sushi	P53 E-2
1-3 Sengokucho Ishinomaki		0225-22-1258
Chinese Restaurant Chugoku Henten	Chinese	P54 E-2
2-10 Sengokucho Ishinomaki		0225-93-8111
Chinese Restaurant Yosuko	Chinese	P55 D-3
2-1-1 Fudocho Ishinomaki		0225-96-1717
Trattoria Azalea	Italian	P54 E-2
2-10 Sengokucho Ishinomaki		0225-93-8111
Toribun	Japanese	P54 E-5
2-7-18 Chuo Ishinomaki		0225-22-0521
Japanese Restaurant Sekitei	Japanese	P54 E-2
2-10 Sengokucho Ishinomaki		0225-93-8111
Negombo	restaurant	P53 D-4
2-1-3 Tachimachi Ishinomaki		080-2831-3716
Food and Drink Mizusawayama Motchan	Japanese	P53 D-4
2-3-27 Tachimachi Ishinomaki		0225-22-2935
Hattori Hanzo Kiwami	izakaya	P53 C-2
SASADEN Building 1F 3-13 Iseba Ishinomaki		0225-24-8287
Pizza & Pasta Bar Belcolpo	Italian	P53 E-5
2-1-18 Chuo Ishinomaki		0225-95-9170



<b>B.B Crepe &amp; Cafe</b>	restaurant	P53 D-4
1-3-6 Tachimachi Ishinomaki	080-3149-9131	
<b>Fuki Sushi</b>	sushi	P53 D-2
8-6 Isenba Ishinomaki	0225-96-8502	
<b>Makiishi</b>	Japanese	P54 F-4
2-5-10 Chuo Ishinomaki	0225-93-4680	
<b>Manrakudo</b>	sweets	P53 C-3
2-4-23 Tachimachi Ishinomaki	0225-22-3348	
<b>Miyuki</b>	Japanese	P53 D-6
1-10-22 Chuo Ishinomaki	0225-96-4787	
<b>RITA's CAFE &amp; BAR</b>	cafe	P53 D-3
ROSY Building 2F-A 2-5-25 Tachimachi Ishinomaki	080-2831-3716	
<b>Restaurant La Lorette</b>	French	P54 E-2
2-10 Sengokucho Ishinomaki	0225-93-8111	
<b>Umihiko Yamahiko</b>	restaurant	P53 D-4
1-2-5 Tachimachi Ishinomaki	0225-93-2603	
<b>feel Bread Studio Cafe</b>	cafe	P54 E-2
2-2 Sengokucho Ishinomaki	0225-24-6885	
<b>Yumeya</b>	restaurant	P54 F-4
2-4-14 Chuo Ishinomaki	0225-23-6678	
<b>Reborn-Art STAND</b>	restaurant	P53 C-1
9-1 Isenba Ishinomaki	080-2070-2738	
<b>ciel étoilé</b>	restaurant	P54 E-4
COMICHI Building 1F 2-7-14 Chuo Ishinomaki	0225-90-4566	

## Hebita, Okaido, Nakazato areas

<b>Atelier de nico</b>	retail store	P55 C-3
1-1-47 Mitsumata Ishinomaki	0225-96-8702	
<b>Ajidokoro Hamacho</b>	Japanese	P55 B-3
4-15-15 Megumino Ishinomaki	0225-93-5150	
<b>Snack Shop Sara no ie</b>	restaurant	P55 C-3
5-23 Nishikicho Ishinomaki	0225-23-1388	
<b>Kato Confectionery</b>	sweets	P55 C-3
1-1-119 Tsukiyama Ishinomaki	0225-22-5642	
<b>Umihiko Yamahiko Akebono Branch</b>	izakaya	P55 C-2
3-1-2 Akebono Ishinomaki	0225-25-6683	
<b>Kouso Spa Masha</b>	cafe	P55 C-3
26-7 Kadonowaki-aza-Aobahigashi Ishinomaki	080-5569-2980	
<b>Koma Sushi</b>	sushi	P55 C-3
2-2-3 Shimizucho Ishinomaki	0225-96-6345	
<b>Sakae Sushi</b>	sushi	P55 C-3
18-9 Nakazone Hebita Ishinomaki	0225-22-6651	
<b>Restaurant Ohashi</b>	restaurant	P55 C-3
2-2-14 Shimizucho Ishinomaki	0225-23-2156	
<b>Seasonal Food Hinata</b>	izakaya	P55 C-3
2-2-49 Yamashitacho Ishinomaki	0225-25-7313	
<b>Shiraken Kamaboko Store Kadonowaki Factory Direct Sales</b>	retail store	P55 B-4
31-1 Kadonowaki-aza-Myojin Ishinomaki	0225-95-2845	
<b>Sushi Ippachi</b>	sushi	P55 C-3
3-4-10 Nakazato Ishinomaki	0225-94-1800	
<b>Sushi Sanpuku</b>	sushi	P55 C-3
3-10-45 Izumicho Ishinomaki	0225-22-4144	
<b>Sushi, Kappo Takemura (Hishokaku)</b>	sushi, Japanese	P55 C-3
1-19-6 Yamashita Ishinomaki	0225-95-2424	
<b>Sushi Haru</b>	sushi	P55 C-3
19-7 Hebita-aza-Shinonodera Ishinomaki	0225-95-8281	
<b>Take Sushi</b>	sushi	P55 B-3
70-2 Kadonowaki-aza-Motourayashiki Ishinomaki	0225-22-4414	
<b>Restaurant Gochiya</b>	Japanese, Western	P55 B-3
5-6-2 Ayumino Ishinomaki	0225-98-7530	
<b>Chinese Restaurant Hibari</b>	Chinese	P55 C-3
2-13 Suehirocho Ishinomaki	0225-94-5178	
<b>Fugetsudo</b>	sweets	P55 C-3
5-17 Nishikicho Ishinomaki	0225-96-4713	
<b>Hattori Hanzo</b>	restaurant	P55 C-2
2-4-7 Akebono Ishinomaki	0225-22-8875	
<b>Fushimiya Confectionery</b>	sweets	P55 C-2
2-1-4 Maruido Ishinomaki	0225-22-0297	
<b>Kaisenmaru</b>	restaurant	P55 C-2
Ishinomaki Akebono 1-6-3	0225-22-9995	
<b>Omuren</b>	restaurant	P55 B-3
Ishinomaki Megumino 6-4-4 Inside GreenThumb Ichiba Market	070-2172-5238	

## Ogatsu area

<b>Denpachi Sushi</b>	sushi	P59 C-4
Inside Kenjo no Sato Ogatsu	080-5575-9976	
<b>Restaurant Misato</b>	Japanese, Western, Chinese	P59 C-4
Inside Kenjo no Sato Ogatsu		

## Kahoku area

<b>Abe Confectionery</b>	sweets	P58 E-4
8 Ainoya-aza-Iinokawamachi Ishinomaki	0225-62-3126	
<b>Kappo Takadai</b>	Japanese	P57 D-4
205-7 Ainoya-aza-Iinokawamachi Ishinomaki	0225-62-3124	
<b>Kawanokami Hyappyokan Kome Cafe</b>	cafe	P57 D-4
343-1 Kofunakoshi-aza-Yamahata Ishinomaki	0225-24-6625	
<b>Japanese Restaurant Takatoku</b>	Japanese	P57 D-4
89 Ainoya-aza-Iinokawamachi Ishinomaki	0225-62-3148	
<b>Japanese Restaurant Kikaku</b>	Japanese	P58 E-4
171 Ainoya-aza-Iinokawamachi Ishinomaki	0225-62-3381	
<b>Japanese Restaurant Kobayashi</b>	Japanese	P57 D-4
Inside Michi-no-Eki Jobon no Sato	090-2609-4581	
<b>Dining Tamariba</b>	restaurant	P57 D-4
Inside Michi-no-Eki Jobon no Sato	070-3968-5533	
<b>Chinese Restaurant kikka</b>	Chinese	P58 E-4
70-2 Ainoya-aza-Iinokawamachi Ishinomaki	0225-62-2701	
<b>Chinese Restaurant Fukuryu Hanten</b>	Chinese	P57 D-4
446 Kofunakoshi-aza-Yamahata Ishinomaki	0225-62-2223	
<b>Western Confectionery Yamaki</b>	sweets	P58 E-4
43 Ainoya-aza-Iinokawamachi Ishinomaki	0225-62-3131	

## Kanan area

<b>ISHINOMAKI Marushin</b>	international cuisine	P57 B-5
109-6 Babayashiki Hirobuchi Ishinomaki	0225-25-5721	
<b>Restaurant on the Hill Choco-le'a</b>	Western	P57 C-5
2-14-23 Sue-aza-Shirasagidai Ishinomaki	0225-73-5154	

## Oshika area

<b>Kogane Sushi</b>	sushi, Japanese	P60 C-4
Inside Whale Town Oshika, 43-1 Minami Ayukawahama Ishinomaki	0225-45-2104	
<b>Seafood Restaurant Nagisa</b>	Japanese	P60 C-4
Inside Whale Town Oshika, 43-1 Minami Ayukawahama Ishinomaki	0225-25-5422	
<b>Plaza Saito</b>	Japanese	P60 C-4
Inside Whale Town Oshika, 43-1 Minami Ayukawahama Ishinomaki	0225-98-4907	
<b>Hotel by the Islands Sakai</b>	restaurant (hotel)	P60 C-4
1-7 Manjishita Ayukawahama Ishinomaki	0225-45-2515	
<b>Portbalena</b>	cafe	P60 C-4
1-5 Minami Ayukawahama Ishinomaki	0225-45-2244	

## Monou area

<b>Restaurant Nirinso</b>	restaurant	P57 C-3
7-1 Shikenmae Nakatsuyama Monoucho Ishinomaki	0225-76-5342	
<b>Fresh fish &amp; Sake Wabisuke</b>	sushi, izakaya	P57 C-2
26-4 Nakatsuyama-aza-Nakatsuyama Monoucho Ishinomaki	0225-76-5850	
<b>Chinese Restaurant Kotobuki</b>	Chinese	P57 C-2
29-3 Azamachi Nakatsuyama Monoucho Ishinomaki	0225-76-3180	
<b>Tonkatsu Taihei</b>	Japanese	P57 C-2
51 Nakatsuyama-aza-Ejita Monoucho Ishinomaki	0225-76-2429	
<b>Monou Japanese Sweets Onuma Honpo</b>	retail store	P57 C-3
119 Kyuuninmachi-aza-Higashimachi Monoucho Ishinomaki	0120-76-3213	

## Ishinomaki Gourmet Guidebook

-Promoting Local Produce & Consumption- (Japanese Only)



Plenty of info and recommended dishes for each member restaurant! The perfect way for you to have fresh Ishinomaki ingredients expertly prepared by skilled chefs!!

Info current as of September 2024.  
You may want to confirm information with the restaurants directly.



# Special Products of Ishinomaki

'Blue Ocean' 'Green Mountains' 'Eternal River'

We are proud of our Ishinomaki products that include wonderful seafood and delicate crafts

## Locally Brewed Sake

Ishinomaki sake has an ideal balance of sweetness and acidity from its rice base. Its smooth clean flavor goes extremely well with seafood, so try it with sushi or sashimi



## Oysters

Miyagi Prefecture in the east and Hiroshima Prefecture in the west are famous all over Japan for oysters. Ishinomaki's oysters are especially good because of the clean and cold ocean environment in which they grow



## Sendai Beef Katsuhiko-go

'Katsuhiko-go' beef is from the strain of the famed Shigeiro breed of cow and is one of the symbols of the very high-quality Sendai beef brand

## Sasa kamaboko boiled fish paste cake

Famous as a specialty of Miyagi Prefecture, Ishinomaki's kamaboko is shaped like a sasa leaf, and uses only the best ingredients for a gourmet taste experience



## Kinka brand

Ishinomaki Fish Market established this premium local brand as a business venture. The fish currently in this brand are Kinka Mackerel, Kinka Bonito and Kinka Coho Salmon, the pinnacle of quality from the port city of ISHINOMAKI



## Hoya (sea-squirt)

Hoya is a local seafood delicacy in season from early spring to summer. Try it as sashimi, vinegared, steamed or smoked. Quite an adventure!



## Ishinomaki Tomatoes

Ishinomaki produces more tomatoes than any other city in Miyagi. The tomatoes are as sweet as fruit and extremely fresh



## Kahoku Seri

Seri, also known as water celery or water dropwort, has an addictingly crisp texture and refreshing taste. Between October and March, the long edible roots are harvested, then between April and May only the leaves are harvested. Enjoy the two different flavors depending on the season!



## Cod Roe

Ishinomaki is one of the major producers of cod roe in Japan. Popular as a gift, different companies have devised their own individual recipes, maybe pickled in wine, miso or sake lees



## Ogatsu Stone

The deep black color of Ogatsu stone has been compared to the black sheen of ladies' hair. We produce inkstones for calligraphy from this stone, and more recently tableware, which adds greatly to the presentation of good food





# Ishinomaki

## GIFT SHOPS

### & RESTAURANTS



Recommended café terrace  
A great view of the manga  
museum & the Kitakami River

### ISHINOMAKI GENKI ICHIBA

Opened in June 2017, Ishinomaki Genki Ichiba is divided into the 1st floor, a shopping area selling fresh Ishinomaki seafood, processed marine products, fruit & vegetables and other gifts. The 2nd floor, a food court with great views of the Kitakami River where you can enjoy Ishinomaki-style food. Also comes with lots of parking space available next to the market. We are looking forward to seeing you soon!

Address: 2-11-11 Chuo Ishinomaki  
Telephone: Ishinomaki Genki Ichiba 0225-98-5539  
OPEN: 1F Shopping Floor 9:00~19:00  
2F Food Court

M-F, Sun, Holidays 11:00~20:00  
Sat, the days before holidays 11:00~20:30  
※hours may change by season

Open every day (please check for hours at New Year, national holidays and o-Bon summer season)

MAP P54 F-5



Checking out the fresh fish!



Fresh vegetables & local sake  
also sold as well as seafood



MICHI NO EKI  
JOBON NO SATO SERVICE STATION

Large bath Kashiwa

kahoku seri

freshwater  
clams



Original character  
Osato-chan



Jobon no Sato  
mini bean cakes

Large bath Sakura



outdoor bath



outdoor bath



sauna



foot bath

A farmer's market selling fresh vegetables and local produce. We recommend the fresh clams, traditional vegetable 'kahoku seri' and the Jobon no Sato mini bean cakes. There is also a bathing facility 'Futago no Yu' which includes a ferruginous chloride hot spring, a rarity for Miyagi. Inside is also a food court where you can try the local cuisine

Address: 1-1 Kofunakoshi-aza-  
Futagokitashimo Ishinomaki  
Tel: Jobon no Sato 0225-98-5539  
OPEN: every day  
(no bathing on the fourth Tuesday of  
the month)

MAP P57 D-4





There are places in Ishinomaki where you can learn about fishery & agriculture, the local history & culture, and also see and learn about the earthquake & tsunami of 2011 and subsequent reconstruction efforts. Going through the disaster has inextricably linked all these places together. Please make use of the valuable lessons learned here and the experiences people have gone through to learn about natural disasters here and the work towards recovery



Website here!



## MORIUMIUS LUSAIL

An educational facility made out of a renovated elementary school that closed down in 2002, it offers applied workshops on fisheries, agriculture, forestry, cooking & woodwork and in doing so offers opportunities to interact with the local people of Ogatsu and experience the beautiful natural resources in the area. Many programs are available to support the education and development of children

• Enquiries, booking  
60 Kuwahama-aza-Kuwahama Ogatsucho Ishinomaki  
☎0225-25-6506 <http://moriumius.jp> P53 D-5

## Hands-on

## Active Learning Programs



Experience assembling a dolphin specimen  
Assemble specimens while learning about different whale body structures.



Developing a City through Manga  
Let's learn from the guide how to "develop a liveable city"



Create a forest from land affected by tsunamis  
Activities that contribute to areas building forests on land affected by tsunamis

Website here!



• Applications, inquiries  
Ishinomaki Area Tourism  
Promotion Organization  
2-11-21 Chuo Ishinomaki  
Community Center  
TEL 0225-98-8285  
FAX. 0225-98-8019



## where you can learn directly about the disaster & disaster prevention

### Guided tours of the tsunami affected areas in Ishinomaki

A volunteer guide will board your bus or car and guide you around the areas of the city worst-hit by the tsunami, also talking about individual experiences and disaster prevention measures. Walking tours around central Ishinomaki also available (interpreters must be provided by customer)

• Enquiries, booking  
Ishinomaki Tourism Association ☎0225-93-6448



### Overview of the Ishinomaki Minamihama Tsunami Memorial Park

The park was created to be a symbol of Ishinomaki's recovery and to provide a place of remembrance and prayer to all the lives lost in the 2011 Earthquake & Tsunami, as well as pass on the memories and lessons from the disaster to future generations.



### Miyagi Tsunami Memorial Museum



A place to learn stories and lessons brought by the disaster  
2-1-56 Minamihamacho Ishinomaki  
☎0225-98-8081  
• OPEN 9:00~17:00  
• CLOSED Mondays (following day if Mon is a holiday), 12/29~1/4  
MAP P53 C-4

### Ishinomaki Newssee



The disaster from the local newspaper's point of view  
2-8-2 Chuo Ishinomaki  
☎0225-98-7323  
• OPEN 10:00~16:00 (Closes earlier in winter)  
• CLOSED Mondays, Thursdays, New Year  
MAP P54 E-4

### Minamihama Tsunagukan (3.11 Memorial Hall)



Includes a mini movie theater showing information on the disaster (English version available)  
3-1-24 Minamihamacho Ishinomaki  
Next to "Ganbaro! Ishinomaki" (Never give up, Ishinomaki!) signboard  
☎0225-98-3681  
(Ishinomaki Memorial Network)  
• OPEN 10:00~16:00  
• CLOSED irregular  
MAP P53 C-4

### MEET Kadonowaki



Teaches about the disaster and includes a large screen theater & videos for children about disaster preparation  
5-1-1 Kadonowakicho Ishinomaki (Next to Kadonowaki Elementary School Ruins)  
☎0225-98-3181  
• OPEN 10:00~17:00 (Entry ends at 16:30)  
• CLOSED Wednesdays  
MAP P53 C-4

## The Ishinomaki Disaster Memorial Hall

### To A New Tomorrow

Ishinomaki publicly opens and preserves the Kadonowaki Elementary School Ruins and Okawa Elementary School Ruins as evidence of the Great East Japan Earthquake and as a lesson for future generations

### Ishinomaki City Kadonowaki Elementary School Ruins

MAP P55 C-4



OPEN  
9:00 ~ 17:00 (Last Entry 16:00)  
※ Winter (11月 ~ 1月) Last Entry 15:30  
CLOSED  
Every Monday (If holiday, closed the next day)  
New Year (Dec 29 ~ Jan 3)  
Special Open Dates  
Every 11th day of the month, 8/12, 9/1, 11/5 (If the Special Dates falls on a Monday, closed the next day)  
Entrance Fee  
Adult : ¥600 (¥500)  
Highschool : ¥300 (¥200)  
Elementary : ¥200 (¥100)  
※ ( ) is the group price.  
※ Group discount requires at least 20 or more people.

The Kadonowaki Elementary School is the only memorial facility in Japan that preserves the state of the building when it was destroyed by a tsunami-caused fire. It warns of the necessity to know the meaning of living together with nature and the sanctity of life, as well as the need to think about evacuation methods and importance of training during times of peace

### Ishinomaki City Okawa Elementary School Ruins

MAP P58 G-3



Disaster Memorial Facility  
Okawa Elementary School  
OPEN  
9:00~17:00 (Also Holidays)  
Entrance Fee Free  
Okawa Tsunami Memorial Hall  
OPEN  
9:00~17:00 (Last Entry 16:30)  
CLOSED  
Every Wednesday (If Wednesday is a holiday, then the next day)  
New Years (Dec 29 ~ Jan 3)  
Special Openings  
Every 11th day of the month and 8/12, 9/1, 11/5 (If there special openings that fall on Wednesday, museum closes the next day)  
Entrance Fee Free

Okawa Elementary School is open publicly as a memorial and mourning facility for the lives lost; a reminder of the impact of disasters and importance of evacuation; as well as an education facility for learning about disaster related risk management, decision making, course of actions, and the sanctity of life.

Website here





# Michi no Eki Kenjo no Sato Ogatsu

TEL: Kenjo no Sato 0225-25-6844

MAP P59 C-4

Overlooking a bountiful ocean from high ground in central Ogatsu, this roadside service station opened in April 2021 and has become a hub for tourism and commerce in the region

## Ogatsu Tanakoya

After the Ogatsu region was decimated in the 2011 earthquake & tsunami, Tanakoya was created to serve as a central hub, bringing new people into the area and helping restore local production. Inside the facility, various tenants including restaurants and a farmers' market offer Ogatsu-produced products and locally-caught fresh seafood

Address: 2-5 Shimoogatsu Ogatsucho Ishinomaki  
Tel: 0225-57-3339 (Ishinomaki Tourism Association Ogatsu Branch)  
OPEN: 9:00am ~ 5:00pm (hours may vary depending on shop)  
Open all year (closed days may vary depending on shop)

## Ogatsu Suzuri Museum & Shop

This facility was rebuilt in a new location after being destroyed in the 2011 tsunami. Inside is a museum dedicated to Ogatsu Suzuri (calligraphy inkstones) which were designated as one of Japan's traditional crafts. There is also a shop selling Ogatsu stone products and an exhibit space sometimes hosting Ogatsu-related displays

Address: 2-17 Shimoogatsu Ogatsucho Ishinomaki  
Time: 9:00am~4:30pm  
CLOSED: Tuesdays (next day if Tues is a holiday), New Years (12/29~1/3)\*

## SEAWALL MUSEUM OGATSU

A huge 3.5km long, up to 10m high seawall was built around the coastline of Ogatsu after the 2011 tsunami. The Coastline Art Museum is an art project that paints murals on this seawall. While the wall protects lives from potential tsunami, it obstructs the beautiful view of the ocean with a mass of grey. By painting these murals along the coast, a new form of scenery is created that connects people & the ocean and the past & the future.

Address: 2-22 Kamiogatsu Ogatsucho Ishinomaki  
Behind the Miura Seafood store building

MAP P59 C-4

海岸線の美術館  
seawall museum ogatsu



# Whale Town Oshika

MAP P60 C-4

いしのみきべし  
ishinomaki oshika

## Local Tourism & Produce Center Cottu

Here you can try local seafood caught by the Oshika Peninsula, as well as buy locally produced products and souvenirs. Ferry services to Kinkasan, Ajishima, and Tashirojima islands are also available here

Address: 43-1 Minami Ayukawa Ishinomaki  
TEL: 0225-24-6644  
OPEN: 8:30~17:00 all year (open hours depend on each tenant)  
CLOSED: Open all year (closed days depending on each tenant)

## Oshika Peninsula Visitor Center

A place to learn about the nature of the Sanriku Fukko National Park & Oshika Peninsula and the lives of people living alongside nature in this remote area. You can also find information about seasonal sights & activities, workshops and seminars

Address: 50-1 Minami Ayukawahama Ishinomaki  
TEL: 0225-24-6912  
OPEN: 9:00~16:00 CLOSED: Every Weds, Dec. 28~31 & Jan. 2~3

## Whale Land Oshika

Opened in July 2020, this is a museum dedicated to the ecology and biology of whales, as well as the history of whaling in the Oshika Peninsula

Address: Minami Ayukawahama Ishinomaki  
TEL: 0225-25-6422  
OPEN: 9:00~16:00 CLOSED: Wednesdays



## Oshika Area

### Reborn Art Festival

Organized around the theme of rebirth and recovery, this is a festival based in and around the Oshika Peninsula with modern art exhibits, music concerts and food events

Famous artists and chefs from Japan and from all over the world come to Oshika every year and work with the local volunteers to get the message out to the world about how cool Oshika is

Enquiries: Reborn-Art Festival Executive Committee Office ☎0225-90-4726



White Deer (Oshika) (Kohji Nawa)



**A Oshika Gobansho Park**

Address : Kurosaki Ayukawahama  
Ishinomaki  
Enquiries : Ishinomaki Oshika Branch  
Office Community  
Promotion Section  
☎0225-45-2114



**B Whale Town Oshika**

Address : 43-1 Minami Ayukawahama  
Ishinomaki  
Enquiries : Whale Town Oshika  
☎0225-24-6644  
OPEN: 8:30~17:00  
Open all year



**C Oshika Family Village Caravan Site**

Address : 1-1 Komagamine  
Ayukawahama Ishinomaki  
Enquiries : Oshika Family Village Caravan  
Site  
☎0225-45-3420



**D Bering Statue**

Address : Ajishima Ishinomaki  
Enquiries : Enquiries : Office  
Community Promotion  
Section  
☎0225-45-2114



**E Aji Shirahama Beach**

Address : Ajihama-jinai Ishinomaki  
Enquiries : Ishinomaki Oshika Branch  
Office Community  
Promotion Section  
☎0225-45-2114



**F Dowameki Cape Lighthouse**

Address : Ajishima Island  
Enquiries : Ishinomaki Oshika Branch  
Office Community  
Promotion Section  
☎0225-45-2114





## Oshika

Views of the Oshika Peninsula  
from Gobansho Park



Sunrise at Ayukawa Port



Kinkasan Island in the morning



The ocean lit up by the sun



Sunset over the Oshika Peninsula



3



### Oshika Family Village Caravan Site

An incredibly beautiful location with views of Kinkasan Island! Fully equipped with cooking facilities, shower room, bathroom & laundromat! Tent site fees from ¥3,000/site. Lodge accommodation from ¥15,000

20mins

4



### Kugunarihama Beach Park

A great place for swimming or barbecues. Equipped with picnic tables, a picnic shelter with sinks, as well as restrooms & showers

Bus to Futawatashi-hama 10mins  
20mins walk from Futawatashi-hama



3



### Donameki Cape Lighthouse

20mins walk from Futawatashi-hama, you will get a wonderful view of the Pacific Ocean from the lighthouse. On the way there, take some time to appreciate the natural rock formations shaped over long years by the elements

2



### Whale Town Oshika

One big facility containing local product shops & restaurants, the Oshika Peninsula Visitor Center, and Oshika Whale Land

2



### Aji Shirahama Beach

One of the most beautiful beaches in Tohoku with incredibly clear water. The emerald green ocean and pure white sand will enchant you any time of the year

## Touring the Oshika Area

Enjoy the natural beauty  
of the area with this  
short driving course

10mins



### Oshika Gobansho Park

The excellent and expansive views from here are not only beautiful, but were strategically used by the feudal domain of Sendai in the Edo era as a lookout for hostile ships.

The main observation point gives you a stunning 360° panoramic view with the Pacific Ocean ahead and the Oshika Peninsula behind.

Boat trip to explore  
Ajishima Island

1min



### Bering Statue

Bering was the Danish explorer whom the Bering Strait is named after. He visited Ajishima while on an exploratory journey and spent some time with the people of the island.

This statue commemorates that visit



## Kanan, Monou, Kahoku Areas

### The Saito Garden (Kanan)

Created by the landowner Zen'emon Saito, the 9th of his line, at the end of the 19th century, the garden fits perfectly in the space between the residence and the hilly area behind. It is designated as a national site of scenic beauty.

Address : 73 Kurosawa Maeyachi Ishinomaki  
Enquiries : Ishinomaki Board of Education Lifelong Learning Section  
☎0225-95-1111



#### B Kawa no Kami Hyappyokan

Address : 343-1 Kofunakoshi-aza-Yamahata Ishinomaki  
Enquiries : Kawa no Kami Hyappyokan  
☎0225-24-6625  
OPEN 11:00 ~ 17:00 Closed : Mondays, New Year  
Parking : parking available (please call for info)



#### E Prefectural Nature Park Asahiya

Address : Asahiya Kitamura Ishinomaki  
Enquiries : Kanan Branch Office Community Promotion Section  
☎0225-72-2114



#### H Monou Information Plaza

Address : 43-1 Shikenmae Nakatsuyama Monouchi Ishinomaki  
Enquiries : Ishinomaki Monou Product & Tourism Association  
☎0225-76-1898  
Closed : Sundays & Wednesdays



#### C Hachimanyama Kamegami Park

Address : 43 Aino-aza-Kyukaijomee Ishinomaki  
Enquiries : Kahoku Branch Office Community Promotion Section  
☎0225-62-2114



#### F Asahiya Drive Inn

Address : 2-3-1 Kitamura-aza-Makugasaki Ishinomaki  
☎0225-73-2361  
Check-in : 15:00/Check-out : 10:00  
Open every day



#### I Monou Center

Address : 164 Jonai-aza-Higashimine Monou Ishinomaki  
Enquiries : Monou Center  
☎0225-76-4565



#### D Korpokkur House

Address : 37-1 Kitamura-aza-Hobigasawa Ishinomaki  
Enquiries : Kanan Branch Office Community Promotion Section  
☎0225-72-2114



#### G Yasaikko

Address : 194-3 Yabuchi-aza-Sanbokukita Ishinomaki  
Enquiries : Kanan-chiku Nosenbutsu Chokubaijo Tomonokai  
☎0225-72-2233 (9:00~17:00)  
OPEN : Wed, Sat, Sun 9:00~17:00



#### J Suzukan Gallery

Address : 21 Wabuchi-aza-Wabuchiho Ishinomaki  
☎090-2026-1527 (Shoji)  
OPEN : Sat, Sun 10:00~16:30



## Touring the Monou Area

Get the full Monou experience all in one trip

2



Monou Information Plaza



Provides local tourist information and sells Monou products such as sweets made of millet, Monou tea & Monou soba noodles

4



Monou Center

Multi-purpose facility including a campsite & adventure playground and sports facilities such as a baseball pitch, tennis courts & a gym

1



Uetateyama Park

A sports park overlooking the Kitakami River, this contains park golf courses, tennis courts and a softball pitch



Koshakuji Temple

Built in 1342, this 680-year-old temple is known for its beautiful ceiling paintings, called 'hana-tenjo.' They were painted by Isha Kikuta, one of the 4 great painters of the Date clan

122 Jonai Nishimura Monacho Ishinomaki  
☎0225-76-4411



5mins

5mins

5mins

## Touring the Kahoku Area

Spoil yourself with the great outdoors, gourmet food & hot springs

2



**Local Specialty: Ramen in Mackerel Soup**  
Innovated in collaboration with Ishinomaki Senshu University, this noodle dish's main stick is its tasty soup made from mackerel. Its delicious but light flavor has garnered many fans who always come back for more

5mins

3



Hachimangama Kamegamori Park

A park located inside Hachiman Shrine. The 'Viewpoint Plaza' has stunning views of the majestic Kitakami River and the On Mountain range in the distance

5



Michi no Eki • Jobon no Sato

A facility combining a produce shop selling locally grown seasonal vegetables and Futago no On, a bath with an uncommon ferruginous chloride hot spring

1



Oppagawa Kasen Sports Park

This riverside sports park has an area of 13.36 hectares and is well equipped with sport gear. A popular gathering place for swans. Work up a sweat while taking in the gorgeous views of the river



Japanese Restaurant Kikaku

171 Aino-asa-Ishinomaki Ishinomaki ☎0225-62-3381  
Open 11:00-14:00  
Closed Mon, 2nd & 4th Thurs (Following day either is a holiday)

Chinese Restaurant Kikka

70-2 Aino-asa-Ishinomaki Ishinomaki ☎0225-62-2701  
Open 11:00-14:30 16:30-19:45  
Closed Mondays

Japanese Restaurant Katsuyoshi

1-1 Kagebashi-asa-Futatabi-Ishinomaki Ishinomaki ☎010-2601-4581  
Open 10:00-18:00 Closed irregular

Japanese Restaurant Takada

205-7 Aino-asa-Ishinomaki Ishinomaki ☎0225-62-3124  
Open 11:00-14:00 Closed Wednesdays

5mins

4



Kana no Kami Hyappyokan

A great place to chat over lunch or tea and a lively local library. Takeout available for bread and sweets

Most popular item:  
fried chicken lunch



Come with many healthy side dishes made from local, seasonal ingredients



Kana no Kami coffee

Exquisitely roasted and served in a cup from the local Minowada kiln

3mins





2

### Sosenji Temple

A Shingon sect temple located in the northern part of Asahi-yama Park. A popular place for tourists to the area to visit, you can find cedars & ginkgo trees, some as old as 800 years, as well as ancient stone monuments.  
48 Kitamura-aza-Kamio Iskinomaki  
☎0225-72-2156

5mins

3



### Saito Garden

Zen'emon Saito, the 9th generation of the Saito family of landowners created this garden at the end of the 19th century. Beautifully laid out between the mansion and the hilly area behind, it is worth a look at any time of the year.

10mins

4



### Asahi-yama Drive Inn

A homely, relaxing inn. You will be served lots of good food made from locally produced ingredients that is both delicious & nutritious. No chance of going hungry here!

Visiting Kanan's mysterious power spots & traditional places



### Suzukan Gallery

A gallery set up inside a remodelled 100-year-old storehouse. Come see a variety of artworks including watercolor and oil paintings made by local artists. Outside the gallery, visitors can enjoy the building's traditional Japanese architecture, intricate folding screens, and the second beauty of the garden.



The Japanese style garden wall is a great place for photos.

## Touring the Kanan Area

Enjoy the wide outdoors and nature's blessings



### Jinsai-ko

Fresh vegetables & flowers, pickles & farmhouse food like mama asado to make. Homemade bread & chiffon cake made from rice flour are also popular.



10mins  
10mins walk from the car park

2



### Asahi-yama Prefectural Park

With a height of 174m and 3ha of grassy mountaintop, this is a wonderful place to relax in the warm sun and look out at the surrounding countryside. Asahi-yama Kannondo, housing a Buddhist statue, is a popular place to take a break from your hike.

3



### Koppokkur House (Asahi-yama Agricultural Experience Training Institute)

This log cabin-style facility is located in the woods and has a campsite. Available for use for groups of 10 or more.

10mins  
15 mins walk from the park



## Kitakami/Ogatsu Area

### The View from Osuzaki Lighthouse

This lighthouse standing on the eastern tip of the Ogatsu Peninsula overlooks the Pacific Ocean and has long been regarded as a symbol of safety for the local fishermen.

This coastline seen from the lighthouse is shaped like a heart, and in 2018 was designated as a 'lighthouse of love, where couples could gaze out and envision their future together



**A Tsurishi Shrine**

Address : 305 Jusanhamaza-Shobuta  
Kitakamicho Ishinomaki  
Enquiries : Tsurishi Shrine  
☎0225-25-6345



**B Kitakami Tourist & Local Produce Center**

Address : 1 Jusanhamaza-Toda  
Kitakamicho Ishinomaki  
Enquiries : Ishinomaki Tourism  
Association  
☎0225-98-9861



**C Oiwake Onsen hot spring**

Address : 1 Onagawa-aza-Onine  
Kitakamicho Ishinomaki  
Enquiries : Oiwake Onsen  
☎0225-67-3209  
Ishinomaki Tourism Association  
HP: <http://www.i-kanko.com/archives/777>



**D Osuzaki Lighthouse**

Address : Osu Ogatsucho  
Ishinomaki  
Enquiries : 2nd Regional Japan Coast  
Guard Headquarters  
☎022-363-0111



**E Ishi Shrine • Hayama Shrine**

Address : 9 Ohama-aza-Ohama  
Ogatsucho Ishinomaki  
Enquiries : Hayama Shrine  
☎0225-58-3355



**F Shirogane Shrine**

Address : 122 Kuwahama-aza-  
Hazaka Ogatsucho  
Ishinomaki  
Enquiries : Shirogane Shrine  
☎0225-58-3355

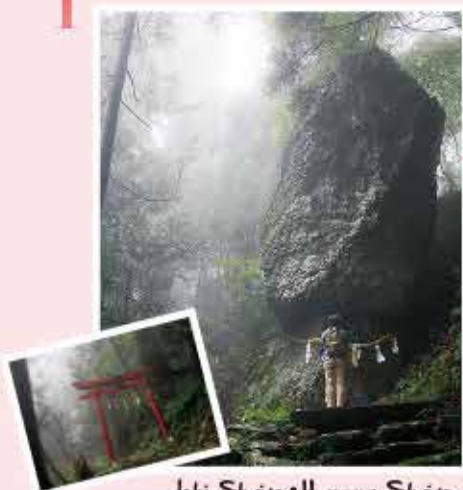


**G Ogatsu Rose Factory Garden**

Address : 24-3 Ogatsucho-aza-  
Misosaku Ishinomaki  
Enquiries : Ogatsu Hana  
Monogatari  
☎090-9037-4593



## Touring the Ogatsu Area



Ishi Shrine • Hayama Shrine

Located on the 352m high Mt Ishimine, this shrine worships the giant boulder on the mountain top, the incarnation of a god. The Date feudal clan and its members would visit Ishi Shrine, also the nearby Hayama Shrine, to worship.

Romantic drive from the rose garden to Osuzaki lighthouse



Ogatsu Rose Factory Garden

Free garden where you can view dozens of different kinds of rose, herbs & seasonal flowers. There are also talks from people who went through the 2011 earthquake & tsunami about their experiences and disaster prevention

10mins + 10mins

2



Shirogane Shrine

The vermilion torii gateway that suddenly appears in the midst of the forest has an otherworldly feel. Stunning coastal views can be found near the shrine.

5mins + 5mins



Osuzaki Lighthouse

Known as the 'Lighthouse of Love,' this is a great place for a date!

2

5min



Michi no Eki Kenjo no Sato Ogatsu

Overlooking a beautiful ocean from high ground in central Ogatsu, this facility is a hub for tourism and commerce in the rural area. In the building you'll find a museum and shop dedicated to suzuri (calligraphy inkstones), a specialty product of Ogatsu. It's also worth a visit for the various shops, cafe, and sushi restaurant in the building

25min

Ogatsu's peaceful mountain retreats and Osuzaki lighthouse, the 'Lighthouse of Love'



## Touring the Kitakami Area

Enjoy the gorgeous natural scenery of Kitakami to the fullest!

1



Kitakami River reed beds

Not only a beautiful view to pleasure your eyes, but the sound of the wind rustling through the reeds with soothe your ears, too

10mins

2



Kitakami Tourist & Local Produce Center

Tourist information & sales of local produce. Be sure to check out garden and displays of the Kawa no Visitor Center in the same building!

5min

3



Shirahama Beach (Sea bathing spot)

Camping Site with large pavilions, toilets, and parking. During Summer, you can enjoy Sea Bathing and seine net fishing!

15min

4



Kaminarizaki

Place of stunning natural beauty, with wild rock crags battered by the ocean waves in the shifting sunlight

Mysterious power spots & a retro-style hot spring in Kitakami

1



Maruyama Jizoson statue

This 3m high statue of Jizo, the guardian deity of children, has been standing here for 200 years! Nearby you'll find a local seafood market/restaurant

2min

2



Tsuri-ishi Shrine

Tsuri-ishi means hanging stone, and the huge rock here that hangs but never falls or fails has become a popular place for students to come and pray for success in exams

20min



3



Oiwake Onsen hot spring

A hidden gem, this hot spring nestled in the mountains has a retro feel. The excellent food they serve includes treasures from both the mountains & the sea!





# List of hotels/accommodation



## Central Ishinomaki

<b>Ishinomaki Apartment Hotel</b>	Business Hotel	F55 D-3
1-15-25 Ekimaekitadori Ishinomaki		0225-23-2045
<b>Ishinomaki Grand Hotel</b>	Hotel	F54 E-2
2-10 Sengokucho Ishinomaki		0225-93-8111
<b>Ishinomaki Sunplaza Hotel</b>	Business Hotel	F54 E-3
1-7-23 Tachimachi Ishinomaki		0225-93-3311
<b>Casa de Costa</b>	Business Hotel	F55 C-3
1-2-39 Tamichicho Ishinomaki		0225-23-1331
<b>Kikuchi Ryokan</b>	Ryokan (Japanese inn)	F53 D-6
1-10-22 Chuo Ishinomaki		0225-22-1942
<b>Guest House Mirai</b>	Public Lodging House	F56 E-4
5-1-69 Kazuma Minami Ishinomaki		0225-98-5738
<b>Convenience Hotel Ayers Rock</b>	Business Hotel	F54 E-3
1-6-21 Tachimachi Ishinomaki		0225-23-5030
<b>Sakari Ryokan</b>	Ryokan (Japanese inn)	F53 C-2
4-7 Isenba Ishinomaki		0225-22-2050
<b>Sant Juan Village</b>	Business Hotel	F56 E-4
11-11 Watanoha-aza-Omori Ishinomaki		0225-25-1288
<b>Seaside Inn Ishinomaki</b>	Ryokan (Japanese inn)	F55 D-4
2-10-1 Matsunami Ishinomaki		0225-96-3866
<b>Ryokan Ishinomaki</b>	Ryokan (Japanese inn)	F53 C-2
2-23 Isenba Ishinomaki		0225-96-5288
<b>Ryokan Sakuraya</b>	Ryokan (Japanese inn)	F55 C-3
1-15-33 Teizan Ishinomaki		0225-95-2686
<b>Weekly &amp; Monthly STAY FREE</b>	Business Hotel	F55 D-3
2-6-6 Kazuma Minami Ishinomaki		0225-96-9908
<b>TAMA HOTEL</b>	Business Hotel	F55 C-3
16-4 Hebita-aza-Komon Ishinomaki		0225-98-8188

<b>Value the Hotel Ishinomaki</b>	Business Hotel	F55 C-3
3-15-37 Minami Nakazato Ishinomaki		0225-92-7567
<b>Business Ryokan Duck</b>	Ryokan (Japanese inn)	F55 C-3
67-4 Hebita-aza-Shirshinonuma Ishinomaki		0225-22-3635-0225-93-3033
<b>FUTABA INN</b>	Business Hotel	F54 C-2
1-2-15 Sumiyoshicho Ishinomaki		0225-94-2922
<b>Hotel Parklight</b>	Business Hotel	F55 D-3
1-2-21 Ohashi Ishinomaki		0225-23-3512
<b>Hotel Pacific</b>	Business Hotel	F53 E-3
1-6-7 Hagurocho Ishinomaki		0225-95-0313
<b>HOTEL HAYASHIYA</b>	Business Hotel	F53 D-3
2-4-28 Tachimachi Ishinomaki		0225-22-0401
<b>Hotel Frontier</b>	Business Hotel	F55 C-3
3-8-35 Izumicho Ishinomaki		0225-94-6878
<b>Hotel Hot Inn Ishinomaki</b>	Business Hotel	F55 C-3
1-4-17 Okaido-kita Ishinomaki		0225-92-6111
<b>Hotel Route Inn Ishinomaki Kanan Inter</b>	Business Hotel	F55 C-3
2-14-2 Megumino Ishinomaki		0225-92-0075
<b>Hotel Route Inn Chuo</b>	Business Hotel	F55 C-3
3-3-3 Okaido-kita Ishinomaki		050-5847-7551-0225-21-5808
<b>Mangoku-so</b>	Public Lodging House	F56 E-3
5-31 Nagaru-aza-Naka Ishinomaki		090-3648-8316
<b>Miura Ryokan</b>	Ryokan (Japanese inn)	F55 B-3
2-4-85 Kadonowaki-aza-Nakayashiki Ishinomaki		0225-22-2018
<b>Guesthouse Shintate</b>	Guesthouse	F55 B-3
2-1-10 Shintate Ishinomaki		0225-93-3810
<b>Guesthouse Zuiko</b>	Guesthouse	F56 F-4
70-1 Hiesawa Momonoura Ishinomaki		0225-90-2341
<b>Momonoura Village</b>	Public Lodging House	F56 G-4
17 Momonoura-aza-Utoki Ishinomaki		0225-25-6870
<b>Guesthouse Hikari</b>	Guesthouse	F55 B-3
2-1-6 Shintate Ishinomaki		0225-93-3810
<b>Ryokan Komatsu-so</b>	Ryokan (Japanese inn)	F55 D-4
1-2-7 Midoricho Ishinomaki		0225-93-1515
<b>Ryokan Tochigi</b>	Ryokan (Japanese inn)	F53 C-2
2-12 Isenba Ishinomaki		0225-93-0510
<b>Yui no hana</b>	Ryokan (Japanese inn)	F56 E-4
20 Watanoha-aza-Hamasoneyama Ishinomaki		0225-24-8773

## Kitakami Area

<b>Oppawan Terrace</b>	Guesthouse	F59 C-2
15-2 Jusanhama-aza-Shimoyama Kitakami Ishinomaki		0225-98-4375
<b>Village AOYA</b>	Public Lodging House	F59 B-3
13 Onagawa-aza-Izumisawa Ishinomaki		0225-25-4144
<b>Guesthouse Urashima-so</b>	Guesthouse	F59 D-1
66 Jusanhama-aza-Ishio Ishinomaki		0225-66-2473
<b>Guesthouse Kotaki-so</b>	Guesthouse	F59 D-1
49 Jusanhama-aza-Kotaki Kitakami Ishinomaki		0225-66-2046
<b>Oiwake Onsen hot spring</b>	Ryokan (Japanese inn)	F59 A-2
1 Onagawa-aza-Omine Kitakami Ishinomaki		0225-67-3209

## Kanan Area

<b>Guesthouse Asahiya Drive Inn</b>	Guesthouse	F57 B-5
3-1 Kitamura-aza-Makugasaki Ishinomaki		0225-73-2361
<b>Maple Terrace Inn</b>	Business Hotel	F57 D-5
57-1 Kanomata-aza-Isemaki Ishinomaki		0225-25-4391-0225-25-4392

## Ogatsu Area

<b>Kameyama Ryokan</b>	Ryokan (Japanese inn)	F59 D-4
218-2 Osu-aza-Osu Ogatsucho Ishinomaki		0225-58-2025
<b>Kuwahama Fisherman Guesthouse</b>	Guesthouse	F59 D-5
32-25 Kuwahama-aza-Kuwahama Ogatsucho Ishinomaki		0225-58-3104
<b>Guesthouse Choeikan</b>	Guesthouse	F59 D-4
222-3 Osu-aza-Osu Ogatsucho Ishinomaki		080-1668-0476
<b>MORIUMIUS LUSAIL</b>	Other	F59 D-5
60 Kuwahama-aza-Kuwahama Ogatsucho Ishinomaki		0225-25-6506
<b>Ogatsu FOREST Campsite</b>	Other	F59 B-5
39 Ogatsu-aza-Hara Ogatsucho Ishinomaki		0225-57-3544
<b>Guesthouse Arakawa-so Oppaya</b>	Guesthouse	F59 D-4
30-2 Funakoshi-aza-Ara Ogatsucho Ishinomaki		0225-98-7151-090-6629-5447
<b>Hiker's Guest House m.s.s books</b>	Guesthouse	F59 B-5
105-6 ogatsu-aza-misaki Ishinomaki		misosakubooks@gmail.com
<b>Guesthouse Sakura</b>	Guesthouse	F59 C-5
87-2 mizusha-aza-mizusha Ishinomaki		090-628-8591-090-9530-1050



Info current as of July 2024.  
You may want to confirm information with the hotels/  
accommodation facilities directly.

## Oshika Area

<b>Japanese Restaurant &amp; Guesthouse Meguro</b>	Guesthouse	F60 B-3
2-1 Kanto Kobuchihama Ishinomaki		0225-46-2515
<b>Guesthouse Sakai</b>	Hotel	F60 C-4
1-7 Manjishita Ayukawahama Ishinomaki		0225-45-2515
<b>Guesthouse Atago-so</b>	Guesthouse	F60 B-3
14-4 Kanto Kobuchihama Ishinomaki		0225-46-2075
<b>Guesthouse Ayukawa-so</b>	Guesthouse	F60 C-4
5 Kurosaki Ayukawahama		0225-45-2039
<b>Guesthouse Ushiroyama-so</b>	Guesthouse	F60 B-3
16-4 Ushiroyama Kyubunhama Ishinomaki		0225-46-2337
<b>Guesthouse Taihei-so</b>	Guesthouse	F60 C-5
29-1 Kurosaki Ayukawahama Ishinomaki		0225-45-2754
<b>Guesthouse Minami-so</b>	Guesthouse	F60 C-4
3 Mamanoue Ayukawahama Ishinomaki		0225-45-2501
<b>Guesthouse Minoru-so</b>	Guesthouse	F60 C-4
1-401 Kurosaki Ayukawahama Ishinomaki		0225-45-2016
<b>Guesthouse Yoriiso-so</b>	Guesthouse	F60 C-1
32 Gobeisawa Yoriisohama Ishinomaki		0225-48-2316
<b>Guesthouse Atami-so</b>	Guesthouse	F60 C-4
1-23 Kurosaki Ayukawahama Ishinomaki		0225-45-2227
<b>Koganeyama Shrine Sanshuden</b>	Public Lodging House	F60 D-4
5 Kinkasan Ayukawahama Ishinomaki		0225-45-2301
<b>Umi no ie Ushiotei Beach House</b>	Guesthouse	F60 B-5
107-52 Kamisorizaka Ajihama Ishinomaki		0225-44-3008
<b>Kimura Ryokan</b>	Ryokan (Japanese inn)	F60 B-5
58 Aji Ajihama Ishinomaki		0225-49-2052
<b>Shiomi-so</b>	Guesthouse	F60 B-5
107-32 Kamisorizaka Ajihama Ishinomaki		0225-49-2205
<b>B&amp;B Seiko Udoku</b>	Guesthouse	F60 B-5
107-40 Kamisorizaka Ajihama Ishinomaki		0225-49-2726
<b>Guesthouse Masaki-so</b>	Guesthouse	F60 B-5
26 Ogane Futawatashihama Ishinomaki		0225-49-2425
<b>Guesthouse Marine Life</b>	Guesthouse	F60 A-4
38 Tashirohama-aza-Nitoda Ishinomaki		0225-21-4122
<b>Fisherman Guesthouse Hamaya</b>	Guesthouse	F60 A-4
53 Tashirohama-aza-Odomari Ishinomaki		0225-98-2620





# Event Calendar



## Cherry Blossoms in Hiyoriyama Park

Location: Hiyoriyama Park, 2 Hiyorigaoka Ishinomaki  
☎0225-95-1111 (Ishinomaki City Tourism Division)

One of the most popular spots in Ishinomaki for 'sakura' cherry blossom viewing, Hiyoriyama Park is at its best for 2 weeks from mid April. There are about 400 trees of various varieties, including the well-known Yoshino. Towards the end of the season, the Gioiko variety is worth a look with its distinctive pale green blooms



## Sant Juan Festival

Location: Sant Juan Museum  
☎0225-24-2210

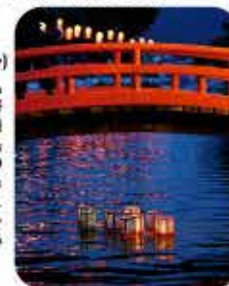
The major festival of spring, this event celebrates the completion of the full-sized replica Sant Juan Bautista galleon. The ship was officially launched on May 22nd, and the festival serves as a way to publicize the museum and surrounding facilities, as well as being a good venue for various groups to get together and show off their activities



## Ishinomaki Kawabiraki Festival

Location: Central Ishinomaki  
☎0225-22-0145  
(Ishinomaki Chamber of Commerce & Industry)

Ishinomaki's biggest festival commemorates the engineer Magobei Kawamura, who by the order of Lord Masamune Date in the 17th century re-routed the rivers around Ishinomaki to protect the city from flooding. The current festival has run for over 100 years, and now includes memorial events for victims of the 2011 tsunami (lanterns floated down the river). The following day sees the streets of central Ishinomaki awash with music, street stalls, marching bands & parades, with lots of fireworks in the evening



## Wabuchi Summer Festival

Location: 'Kanan Mizube no Gakko' Riverside  
☎0225-72-2114

7,000 lanterns give this festival a fairytale atmosphere, together with artistic performances, food stalls and fireworks, all combining to give you a great time!

## Ogatsu Summer Seafood Festival

Location: Michi no Eki Kenjo no Sato Ogatsu  
☎0225-57-3339  
(Ogatsu Fukko Ichi Executive Committee)

The main event may be the sale of delicious sea-urchin at rock-bottom prices, but the stalls in the area also serve local food made of sea-urchin, haya and other seasonal ingredients



## Dragon Dance of Dedication

Location: Kinkasan Kaganeyama Shrine  
☎0225-45-2301

The 20m long dragon weighing 100kg is controlled by 10 people, and almost feels like a real large dragon dancing to drums, percussion & trumpets.

4 April



## Kanan Kashima Bayashi Dashi Festival

Location: Hirabuchi  
☎0225-84-3663 (Kanan Public Hall)  
☎0225-93-1910 (Lifelong Learning Division)

5 May



## Spring Mangattan Festival

Location: Ishinomori Manga Museum  
☎0225-96-5055

6 June



## Summer purification rite

Location: Makiyama Hizuaki Shrine  
☎0225-23-2815

7 July

- mid July to late August
- Aji Shirahama Beach
- Ogatsu Arahama Beach
- Kitakami Shirahama Beach
- Watanoha Beach
- Kugunarihama Beach

8 August

## Summer Festival in Kahoku

Location: Kahoku Media Ship & Big Bang Community Center  
☎0225-62-3161

## Tricolore Music Festival

Location: Central Ishinomaki  
☎0225-23-2109



## ★ Monou Fureai Festival Haneko Dance Festival in Monou

2nd Saturday of September

Location: Monou Uetateyama Park

Monou Fureai Festival Executive Committee

☎0225-76-2111 (Monou Office Community Promotion Section)

☎0225-76-3315 (Kanan Monou Commerce & Industry Association/Monou Division)

The Haneko Dance, which prays for a good harvest, is relatively rare in Japan for a folk dance because of its rhythmical style. It is made up of three sections, up tempo, mid tempo & slow. About 1,000 people dance it, and anyone is free to join if they feel like it. The finale includes a firework display that lights up the summer night in a riot of color.



## ★ Tour de Tohoku

mid September

Tour de Tohoku Executive Committee

This event has been held in September since 2013 to contribute to the reconstruction effort after the 2011 tsunami. It is held not so much as a competition, but as a fun event for anyone to take part in, as they travel around the tsunami-affected area at their own pace to see for themselves how things are progressing. Stopping off at the many rest stations gives you a chance to meet the locals and try some local dishes. Why not give it a try?!



## ★ Kinaksan Koganeyama Shrine Shinroku Tsunokiri (horn-cutting) Gyoji Festival

early October

Location: Kinkasan Koganeyama Shrine

☎0225-45-2301

Shinto festival in which 30 male deer in the shrine grounds are held down by hunters and have their antlers sheared off, in a strong show of courage. A rare event that can only be seen here and in Nara.



## ★ Ishinomaki Tairyo (great catch) Festival

mid October

Location: Ishinomaki Uoichiba Wholesale Fish Market

☎0225-95-1111 (Ishinomaki City Fishery Division)

Ishinomaki has one of the most productive fishing industries in the country, and at this festival you can find a wealth of seafood and processed marine products at knockdown prices. There are lots of other events, such as fish auctions, fish-catching games, and a tuna-filleting display (with free tasting!), something for all the family!



## ★ Kinkasan Koganeyama Shrine Hatsumi Festival

May (the week from the first 'serpent day' of the serpent month)

Location: Kinkasan Koganeyama shrine

☎0225-45-2301

The biggest event in the Shrine's yearly schedule, held over one week in May, the month of the serpent, known as the messenger of Benzaiten, the goddess of wealth. On the Sunday of the week, a busy procession is held where many shrine parishioners shouldering 'mikoshi' portable shrines walk from the shrine down to the sea, watched over by the many visitors to this popular event.

## ★ Sant Juan Bautista Park Winter Illuminations

early November to late January

Location: Sant Juan Museum ☎0225-24-2210

Staying open after dark for an extra 3 hours to 19:30, take in the beautiful sight of the Sant Juan Bautista ship illuminated by 10,000 lights, as well as various other events.



## ★ Mangattan New Year Event

Early January

Location: Ishinomori Manga Museum ☎0225-96-5055

Lots of New Year-themed events including 'mochituki' ricecake pounding (given out free afterwards) & kite-flying, a great family event!



## 9 September

### ★ Kinkasan Koganeyama Shrine Grand Festival

Location: Kinkasan Koganeyama Shrine ☎0225-45-2301

## 10 October

- ★ Whale Town Oshika Anniversary Festival  
Location: Whale Town Oshika ☎0225-24-6644
- ★ Ogatsu Autumn Seafood Festival  
Location: Michi no Eki Kanjo no Sato Ogatsu ☎0225-24-6644 (Kanjo no Sato Road Station)
- ★ Kitakami Nikkori Festival  
Location: Kitakami Multi-purpose Park ☎0225-67-2114 (Kitakami Branch Office Community Promotion Section)
- ★ Kanan Festival  
Location: Yagakuken ☎0225-73-2114 (Kanan Festival Executive Committee/Office Community Promotion Section)

## 11 November

- ★ Kahoku Produce Festival  
Location: Kahoku Big Bang Community Center ☎0225-62-2114 (Kahoku Branch Office Community Promotion Section)
- ★ Mangattan Culture Festival  
Location: Ishinomaki Mangattan Museum ☎0225-96-5055

## 12 December

- ★ Nikkori Toshi no Ichi (year-end happy market)  
Location: within Kitakami area ☎0225-67-2114 (Kitakami Branch Office Community Promotion Section)
- ★ Ogatsutoshi no Ichi Market  
Location: Kanjo no Sato Road Station ☎0225-25-6844 (Kanjo no Sato Ogatsu)

### ★ Mangattan Christmas

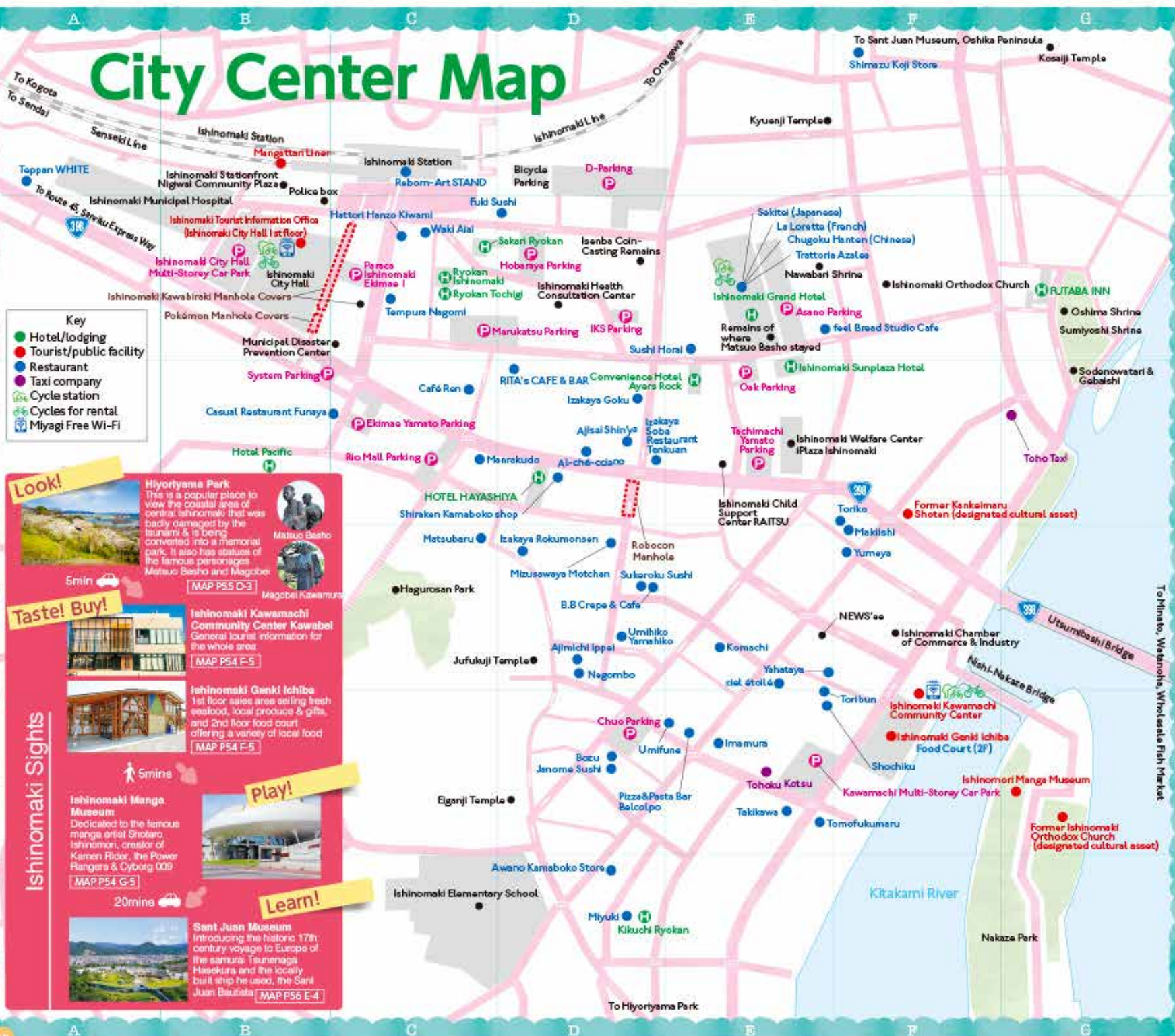
Location: Ishinomori Manga Museum ☎0225-96-5055

### ★ Kinkasan Koganeyama Shrine Purification & Seeing out the Old Year

Location: Kinkasan Koganeyama Shrine ☎0225-45-2301



# City Center Map



**Shigeoishi Shrine**  
Enshrines Magobei Kawamura who greatly helped Ishinomaki with his river engineering work, ordered by Lord Masamune Date in the 17th century.  
MAP P55 B-3

**Oshima Shrine (Sumiyoshi Park)**  
Visited by the haiku poet Matsuo Basho, & location of the Makishi rock in the Kitakami River which may be the origin of the name Ishinomaki.  
MAP P54 G-2

**Sodenowatari & Gebaishi**  
Where the famous samurai warrior & military commander Minamoto no Yoshitane is said to have passed through.

**Ishinomaki Haristos Orthodox Church**  
Haristos is the Greek name for Christ. Visitors wanting to view the inside of this church in a peaceful residential area should contact the office next to it.  
MAP P54 F-2

**Nawabari Shrine**  
This shrine contains measuring ropes used by Magobei Kawamura in his construction work on the Kitakami River.  
MAP P54 E-2

**Former Ishinomaki Haristos Orthodox Church**  
(designated municipal cultural asset)  
A lovely western-style piece of architecture on Nakaza island in the middle of the Kitakami River.  
MAP P54 G-5

**Sakkoji Temple (Kheila Sanada's monument)**  
A descendant of Yukimura Sanada, Sanada was an active samurai in the late Edo Period who lived in Ishinomaki after retiring. A stone monument to him can be found here.  
MAP P55 D-3



# Central Ishinomaki

- Key**
- Hotel/lodging
  - Tourist/public facility
  - Restaurant
  - Taxi company
  - Cycle station
  - Cycles for rental



Cherry blossoms on Mt Kanjo



Morning at Ishinomaki Bay



Mangoku-ura Bay



Sunset over the Oshika Peninsula  
(Kitsunezaki-hama)

photo: photo koto sugi © sugiyama

## Nippon Paper Group Ishinomaki Mill

※ Mill site is private land. Please view from nearby public roads, while being careful of the many trucks and other vehicles that come and go. Strictly no entry into the Mill site.



Kadonowaki Elementary School Ruins  
Minamihama Tsunaguken/  
MEET Kadonowaki/  
Miyagi Tsunami Memorial Museum



Ishinomaki Fish Market area enlarged map







Key  
Hotel/lodging  
Tourist/public facility  
Restaurant, cafe  
Taxi company  
Bicycle station  
Bicycles for rental



# Kitakami Area

# Ogatsu Area

## Key

- Hotel/lodging
- Tourist/public facility
- Restaurant
- Taxi company
- Cycle station
- Cycles for rental



Kamiwartzaki Natural Park  
Urashima-so  
Kotaki-so



Ozashi Harbor

Ozashi Harbor

Togezaki

Yakelima Island

Arakama Beach

Osuzaki Lighthouse

Ogatsu Teiko

Kenjo no Sato Ogatsu Service Area

SEA WALL MUSEUM OGATSU

Ogatsu Rose Factory Garden

Hiker's Guest House

Ogatsu FOREST Campsite

Namita Community Center

Shirogane Shrine

Ohama

Guesthouse Sakura

MORIUMIUS LUSAIL

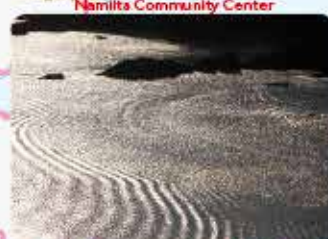
Shirogane Shrine



Kitakami reed beds



Ohama, Ogatsu Bay in summer



Morning view of the ocean from Togetaki

# Oshika Area

## Key

- Hotel/lodging
- Tourist/public facility
- Restaurant
- Taxi company
- Cycle station
- Cycles for rental



Samehura Bay by moonlight

Kobo's Well

Hemaya

Neko (Cat) Shrine

Nitoda-hama

Guesthouse Marine Life

Mitsushizaki

Kannon Image from the Ocean

MANGA Island

Aji Shirahama Beach

Shiomi-so

B&B Saiko Udoku

Boring Status

Ushiotai Beach House

Kimura Ryokan

Ajishima Island

Masaki-so

Dowamaki Cape (Lighthouse)

Ushiroyama-so

Kappa Guesthouse

Maguro

Whale Town Oshika (Kogane Sushi)

Plaza Saito

Seafood Restaurant Nagisa

Kuginari-hama Beach Park

Ring Cafe (Yamazaki Shop Toyokan Ayukawa)

Cafe Port

Batana

Minami-so

Ayukawa-so

Minoru-so

Oshika Gobansho Park

Atami-so

Taihal-so

Kinkasan

Guesthouse Sakai

Oshika Family Village Caravan Site

Kinkasan Koganeyama Shrine

Kinkasan Rest Area

Kinkasan

Kinkasan Lighthouse

Ayukawa Kinkasan Sea Route

Masaki-so

Dowamaki Cape (Lighthouse)

Ishinomaki Bay

Samehura Bay

Onagawa Bay

Onagawa Kinkasan Sea Route

Ishinomaki Bay from the Cobalt Line

photo: photo koto sugi @sugiyama

Sunrise over Kinkasan

photo: photo koto sugi @sugiyama



Ishinomaki Bay from the Cobalt Line



Sunrise over Kinkasan

photo: photo koto sugi @sugiyama



# Ishinomaki Full Area Map



### By Car



The schematic diagram illustrates the proposed high-voltage transmission line route from Matsuyama to Sanuki. The route is divided into several sections with specific lengths and capacities. The total length is 210km. The diagram also shows the connection to the Sanuki Electric Power Company (Sanuki Electric Power Co., Ltd.) and the Sanuki Electric Power Company (Sanuki Electric Power Co., Ltd.).

Section	Length (km)	Capacity (MW)
Matsuyama - Sanuki (Sanuki Station)	70	1200
Sanuki (Sanuki Station) - Maruho Station	109	1200
Maruho Station - Aikoku Station	114	1200
Aikoku Station - Aomori Station	281	1200
Aomori Station - Yamaguchi Station	126	1200
Yamaguchi Station - Takahashi Station	63	1200
Takahashi Station - Sanuki Station	174	1200

The diagram also shows the connection to the Sanuki Electric Power Company (Sanuki Electric Power Co., Ltd.) and the Sanuki Electric Power Company (Sanuki Electric Power Co., Ltd.).

### By Train



Diagram illustrating the rail network connecting Sordai, Kagato, and Furukawa:

- Sordai to Kagato:**
  - JR Sordai Line: 10.0 km, regular train 10 min.
  - JR Sordai Tsubaki Line: 10.0 km, regular train 10 min, express 15 min.
  - JR Tsubaki Line: regular train 10 min.
- Kagato to Furukawa:**
  - JR Ichikawa Line: 10.0 km, 40 min.

### By Bus



London: from page 23 over General Election	Chile	5000000000
Tokyo	6 hours shorter	



# Your journey around Ishinomaki starts here!

We are waiting for you with all the information you need for sightseeing



Ishinomaki Kawamachi Community Center **KAWABEI**

## KAWABEI

2-11-21 Chuo Ishinomaki

☎0225-93-6448

Open: 9:00~21:00

Closed: 12/29~1/3

Toilet for wheelchairs

Nursing room available

Diaper changing table



## TRAVEL to Ishinomaki, in a FANTASY RPG!



Free to Play!

Download the game:  
**Kizuna Fantasia**



Google Play



App Store

Kizuna Fantasia



Ishinomaki City Hall, Department  
of Industries, Tourism Division

Issued by: Ishinomaki Tourism Association ☎0225-93-6448

Issued on: March 2025

宮城県国際観光テーマ地区

Printing・Binding: Suzuki Printing Co., Ltd.

Cover, p8, p21 illustrations: © Issei Suzuki, created by RIRIKO & RIN