

[illegible]

# ISHINOMAKI Tourist Guide Book



Welcome to Ishinomaki Station  
 歡迎來到石卷站

ようこそ石巻駅へ



アレキ  
 石巻市住吉町 1-8-2

welcome to  
**ISHINOMAKI**

The city of the Ocean, Manga and Delicious Food



みどりの  
 Ticket Office



## MANGATTAN LINER

The Senseki Line that runs between JR Sendai Aoba-dori Station & ISHINOMAKI Station has the Mangattan Liner, a special train decorated with characters created by SHOTARO ISHINOMORI (Cyborg 009 etc). Check out the music in the train that departs from ISHINOMAKI Station. The train uses the music only on holidays



Every Sunday

Aoba-dori (dep 10:17) ⇒ Ishinomaki (arr 11:46)

※ On arrival at ISHINOMAKI Station, you will get a 'Boarding Commemorative Certificate'  
 ※ Train schedules are subject to unnotified change

ISHINOMAKI Station 0225-95-0580







A museum for Manga (Japanese Comic) artist Shotaro Ishinomori who created Cyborg 009, Kamen (Masked) Rider etc. The museum has rare original paintings, exhibitions and attractions such as 3D reproductions of Ishinomori's work and screenings of original animation etc. You will definitely enjoy the world of manga, limited only by your imagination. You can read 6,000 manga books or watch 300 films for free at the Manga • Anime Studio! Open Workshops that anybody can join are also held every day



© ISHINOMORI PRODUCTION  
© ISHINOMORI PRODUCTION • TOEI CO., LTD.  
© ISHINOMORI PRODUCTION / MACHIZUKURI MANBOW

## MANGA • ANIME STUDIO



Experience the world of Manga artists!

### CONTACT

ISHINOMORI MANGATTAN MUSEUM

2-7 Nakaze Ishinomaki  
TEL. 0225-96-5055  
<http://www.mangattan.jp/manga/>  
Open 9:00~18:00 (17:00 Dec-Feb)

#### Access

12mins walk from JR Ishinomaki Station  
Sanriku Expressway  
15mins from Ishinomaki Kanan Exit (11)  
※ Use Kawamachi multi-storey car park.



PAMPHLETS  
AVAILABLE  
ALL OVER THE CITY



# ISHINOMAKI MANGA ROAD

The Manga Road (1km) starts from Ishinomaki Station and leads to Ishinomori Mangattan Museum. Look for the Ishinomori character statues on your way!



Characters appear every hour on the hour!!

Automaton Clock

START!

Ishinomaki Station

BonBon&Gonta (on postbox)

Cyborg 003

City Hall

Kamen Rider V3

Cyborg 001-005

Cyborg 008

Cyborg 004

77 bank

Cyborg 007

Skullman

Cyborg 006

Ishinomaki Child Support Center RAITSU

Kamen Rider 1

Sumiyoshi Park

Kankeimaru P7

Shin Utsumi Bridge (completed in 2021)

Kamen Rider BLACK

COMMON-SHIP Hashi-dori P50 F-4

Ishinomaki Kawamachi Community Center 'Kawabei'

Ishinomaki Genki Ichiba Market

Seajetter Kaito

GOAL!

Ishinomori Mangattan Museum P3.4

Robocon

Manga Shrine

## ISHINOMAKI KOKESHI



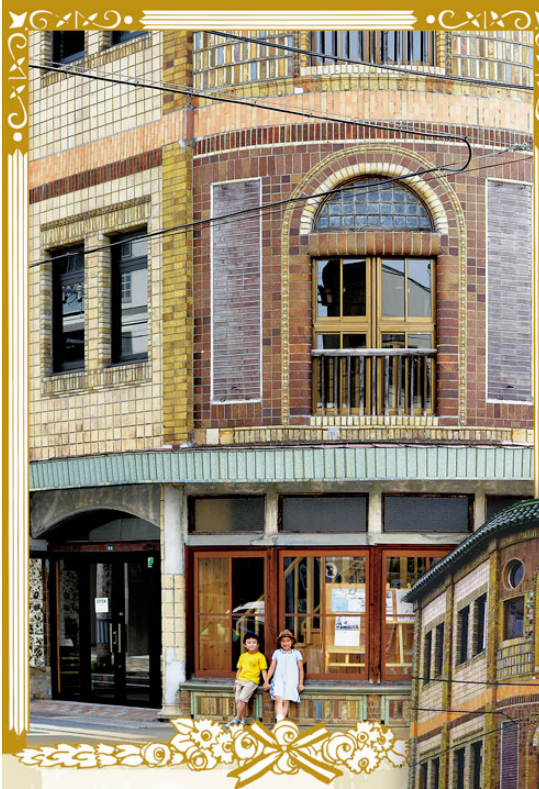
THE STUDIO AND WORKSHOP OF TAKATOSHI HAYASHI, THIRD GENERATION OWNER OF HAYASHIYA KIMONO SHOP. THE KOKESHI DOLLS ARE NOT LIKE TRADITIONAL KOKESHI DOLLS: THEY HAVE SPECIAL COLORS & DESIGNS THEMED AROUND ISHINOMAKI AND LOOK VERY CUTE. YOU CAN TRY MAKING YOUR OWN KOKESHI (¥2,500/PERSON, RESERVATIONS REQUIRED)

LOCATED INSIDE HAYASHIYA KIMONO SHOP  
ISHINOMAKI KOKESHI STUDIO 'TREE TREE ISHINOMAKI'  
OPEN: 10:00~17:00 CLOSED: IRREGULAR  
2-6-26 TACHIMACHI, ISHINOMAKI  
☎0225-93-5151

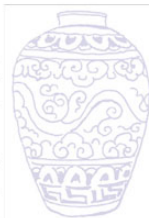


There are street maps dotted along the streets





Kankeimaru Shoten "KANKEIMARU" was built as the first department store in Ishinomaki. It continued to be loved by the citizens as a pottery & ceramic shop for 80 years. While being built of wood, the outer walls are covered with assorted Spanish and other tiles, and the round and arched windows remind us of European architecture. This is a particular characteristic of the building. It is known as a symbol of prosperity of the port city Ishinomaki



OPEN : 9:00~17:00  
(when cultural events are held, it may be open until 21:00)  
CLOSED : Tuesdays (or the following day if Tuesday is a national holiday)  
New Year holidays (December 29th ~ January 3rd)  
Entrance : free (cultural events may require an entrance fee)

Address : 3-6-9 Chuo, Ishinomaki

MAP P50-P53

Access : 10mins walk from JR Ishinomaki Station (no parking)

Phone : Former Kankeimaru Store  
0225-94-0191  
info@kankeimaru.jp



Used as an exhibition hall or rental gallery for displays on Ishinomaki history & culture

## KANKEIMARU EXHIBITS



Tiles from the entrance pillars



Tiles from the outside wall



Arched front window

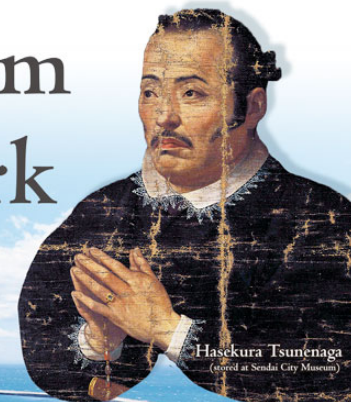


Relief tiles from the former cafeteria



Pamphlets available all over the city

# Sant Juan Museum & Sant Juan Park



Hasekura Tsunenaga  
(stored at Sendai City Museum)



Sant Juan Museum & Sant Juan Park

Tsukinoura



The Sant Juan Bautista was built on the order of Sendai feudal lord Masamune Date in 1613. It set sail from Ishinomaki heading for Europe. The mission members led by Tsunenaga Hasekura were called the 'Keicho Envoy'. The Sant Juan Museum introduces the historical exploits of Tsunenaga Hasekura and the journey using a replica ship, diorama, display panels and big screen theater etc.

## VIEW POINT

## NEARBY

Tsukinoura where the Keicho Envoy set sail

This is where the mission started their journey towards Europe. The hilltop has a great view of the blue ocean with an observation deck, a stone slab showing the sailing route and a statue of Tsunenaga Hasekura made by the sculptor Churyo Sato who was born in Miyagi Prefecture



Entrance : ¥350 (under 16 free)

OPEN : 9:30~16:30

※ Last entrance 30mins before closing

※ Open until 17:30 in August

Closed : Tuesdays (except national holidays), New Year holidays

Access: Train/take Ishinomaki Line from Ishinomaki Station to Watanoha Station, 25mins walk or 5mins by taxi

Car/From Sanriku Expressway Ishinomaki Kanan Exit (11) via Magiyama Tunnel (30mins)

Parking : free (capacity 300 cars, buses (call first))

Address : 30-2 Watanoha-aza-omori Ishinomaki  
MAP P52-P54

Phone : Sant Juan Museum  
0225-24-2210  
http://www.santjuan.or.jp/  
Ishinomaki City Tourism Division  
0225-95-1111

※ Visitors can no longer board the replica ship or enter the dockyard (since April 2016) owing to aging/deterioration



Sant Juan Plaza inspired by Italian design



Pamphlets available all over the city



# Magiyama Shimin no Mori

The super roller slide and big panorama observatory are highly recommended! After messing around, enjoy outdoor activities such as BBQ or campfire!



Lots of outdoor climbing apparatus!



BBQ house and the cookery area



Fun sledding slope for kids



Super roller slide that goes through the woods  
It's fenced in at high spots, so it's safe for kids!

- Facilities using fire (BBQ house & campfire etc) require advance
- Pots, hotplates & grilles available to borrow: ask at office  
[no charge for use]  
Closed: Dec 28th ~ Jan 3rd

Enquiries:  
Magiyama Shimin no Mori Office  
☎0225-93-9702

MAP P51-D3

## Kanan Park Golf course

4 courses, 36 holes, some as long as 90 meters, this park golf course can even be used in winter and has been internationally certified

- Price: Under 16 ¥200, adults ¥500  
Rental equipment ¥300/set ※membership fees also available
- Open: Apr~Sep 9:00~17:00  
Oct~Mar 9:00~16:00
- Closed: Mondays (or the following day if Monday is a national holiday), New Year
- Access: Train / 10mins walk from JR Maeyachi Station  
Car / 20min from Sanriku Expressway Yamoto Exit(9)

Enquiries:  
Ishinomaki Kanan Park Golf Course  
☎0225-72-2933

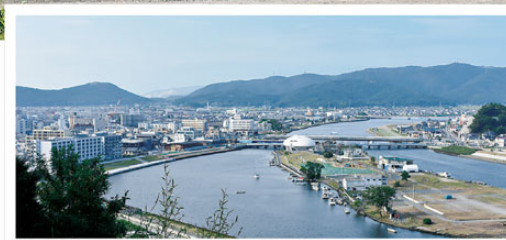
MAP P53-B4

## HIYORIYAMA PARK

This is one of the major historical places that haiku poet Matsuo Basho visited.  
Because of its location as an excellent vantage point to see the progress of construction work on the memorial park area that was most badly damaged by the tsunami, Hiyoriyama Park has become a mecca for people to visit to get an idea of how reconstruction here is progressing.



You may get an idea of what Basho himself saw?!



Through the torii gateway on the south side of the park you can get views of the Pacific Ocean, while the northern side affords views of the city around the Kitakami River

Contact :  
Ishinomaki City Tourism Division  
☎0225-95-1111

MAP P51-D3

## ISHINOMAKI AREA SEASIDE RIDE

THE LOCAL CITIZENS LET CYCLISTS USE CAFÉS, RESTAURANTS AND BATHING FACILITIES TO REST AND RELAX IN, MEANING THAT CYCLISTS CAN ENJOY SIGHTSEEING IN THE AREA



CHECK THE MAPS AT THE END OF THE BOOKLET FOR CYCLE STATIONS

CYCLE STATION CYCLE STATION

Cycle station services

- |  |                          |
|--|--------------------------|
| Places to rest                           | Cycling equipment to use |
| Bicycle pumps                            | Bicycle stands           |
| Water                                    | Restrooms*               |
| Information (sightseeing・cycling course) | Wi-fi*                   |

\*Some services not available depending on location





# Recommended travel means

## Japan Car Sharing Association



Car rental available to people supporting the rejuvenation of Tohoku at a special price! Also, as part of a plan to support tourism in the Oshika, Ogatsu & Kitakami areas, you can use the 'local support rent-a-car', which gives you up to ¥2,000 cash-back for shopping at member stores

**OPEN:** 9:00~18:00 **CLOSED:** mid-August, New Year **Parking:** none

**Fee:** light vehicle 24hrs ¥6,000~ (regular price, tax extra)  
standard vehicle 24hrs ¥8,500~ ( // )

※ Minimum rental: 6 hours

**Phone** : 0225-22-1453

**Address** : 1-5-23 Ekimae Kitadori, Ishinomaki MAP P51 C-3

<https://www.japan-csa.org/>

## Taxi Companies

Ishinomaki Kanko Taxi	P52 E-3	0225-95-2311
Kogyoko Taxi	P51 C-3	0225-23-2323
Toho Taxi	P50 G-3	0225-22-5101
Miyagi Kotsu	P51 D-3	0225-22-4121
Ishinomaki Taxi	P51 C-3	0225-22-3165
Taxi Pumpkin	P51 C-3	0225-96-6626
Marugo Taxi	P51 C-3	0120-05-7661
Hibari Taxi	P51 C-3	0225-22-5240
Miyagi Kanko Co., Ltd.	P51 D-3	0225-22-9245
Sanriku Taxi	P51 D-3	0225-93-3321
Kitakami Taxi	P51 C-3	0120-45-6311
Kaneto Taxi	P52 E-4	0225-24-0117
Ishinomaki Kotsu	P51 C-3	0120-250-274
Tohoku Kotsu	P50 E-5	0225-22-1622
Koyo Taxi	P51 C-3	0120-95-8662
Ayukawa Kanko Taxi	P56 C-4	0225-45-3233
Kanomata Taxi	P53 D-5	0225-74-2005
Maeyachi Taxi	P53 B-4	0225-72-3078
Kekeyama Taxi (Kanan)	P53 C-4	0225-74-2121
Kekeyama Taxi (Monou)	P53 C-2	0225-76-2341
Tatamiishi Kanko Taxi	P53 C-5	0225-73-3488
Fuji Taxi	P54 E-4	0225-62-3059
Ogatsu Taxi	P54 E-4	0225-57-2020
Matsuyama Kanko Taxi	P54 E-4	0225-62-2131
Yamatake Taxi	P54 E-5	0225-62-3088

## Bicycles for rental



- P52 E-4 Sant Juan Park
- P50 F-5 Ishinomaki Genki Ichiba
- P50 E-2 Ishinomaki Grand Hotel
- P55 B-3 Kitakami Tourist Produce Center
- P53 D-4 Kawanokami Hyappyokan

**Rental:** ¥3,000 (inc tax) per bicycle  
Includes helmet and repair kit



Check the map at the end of the book for bicycle rental stations

More details & booking

Ishinomaki Area Tourism Promotion Organization

PHONE: 0225-98-8285

<https://www.umimachi-sanpo.com/>

# Tour de Tohoku

Tour de Tohoku was devised not for competition, but as a means to keep the memory of the Great East Japan Earthquake and tsunami alive and support the reconstruction effort.

And of course, a way to just enjoy cycling!

The whole event has been planned so that you can not only learn about the reconstruction, but also enjoy the beautiful scenery and delicious food that only this area can offer!

We are really hoping that Tour de Tohoku will bring more and more tourists to the TOHOKU area



Photo/KAHOKU SHIMPO PUBLISHING CO.



# Kinkasan Island

Kinkasan is one of the most famous sacred islands in eastern Japan. The deer and monkeys there are considered to be 'messengers of the gods,' and all wild animals are venerated. Because it is a sacred island, not only hunting but also the cutting down of trees has long been forbidden, so there are some very old beech and zelkova trees there

## Big three traditional festivals

※ Check the event calendar on P45~48 for more details



Hatsumi Festival



Ryujin Festival, Dragon Dance of Dedication



Shinroku Tsunokiri Festival (deer antler cutting)

## Access

[Enquiries for schedules of ships from Ayukawa port to Kinkasan]

Regular ship (up to 70 people)

Every Sunday: depart Ayukawa at 10:30, depart Kinkasan at 12:30

¥2,500/person roundtrip required time: 20mins

Smaller boat (up to 12 people)

Required time: 15mins

5 or more people: ¥3,000/person roundtrip

less than 5 people: ¥15,000 charter fee

Advance reservation essential, please contact to book

Kinkasan Passage Business Cooperative

0225-44-1850

## Koganeyama Shrine

Koganeyama Shrine on Kinkasan Island was built about 1250 years ago. People have been coming since olden times to pray to the God of Wealth and Production here. The god is also known as the God of Luck & Prosperity, and it is said that if you come and pray here for 3 consecutive years, you will have no money troubles for the rest of your life

**Kinkasan Koganeyama shrine**  
5 Kinkasan Ayukawa-hama Ishinomaki  
0225-45-2301



There are many trees over several hundred years old on the road approaching the main shrine



The carving on the main shrine is amazingly beautiful, a testament to the skills of the engravers of the age

A large lantern several meters high. The upper left photo gives a good idea of its size



Sacred zelkova tree over 800 years old

POINT



You can hang out with deer on Kinkasan Island  
※ Even though deer are used to people, please be careful when feeding them etc.

We sometimes feel cranky, so be nice to us!



# Tashiro Island

It takes 50mins to get to Tashiro Island from central Ishinomaki. Tashiro Island is also called Cat Island because of the many cats living there. There are two villages on the island, Odomari and Nitoda and there are also camp sites and lodging facilities. It's a great place to enjoy fishing and other outdoor activities



## Access

[To wharf] See info for Ajishima Island

[Wharf to Tashiro Island]

50mins on the Ajishima Line (¥1,230 one way)

📞Ishinomaki Community Promotion Section

0225-95-1111

Ajishima Line

0225-93-6125



## Cat Shrine



The Neko (cat) Shrine dedicated to cats is a result of the main local industry of fishing. The islanders would judge the size and quality of the catch according to the behavior of the cats, and the cats came to be venerated and deified



## PICK UP



Check out our pamphlet right miaow!



## MANGA Island

This accommodation facility has 5 lodges, all cat-themed, some cat-shaped and designed by famous manga artists Michiko Satonaka and Tetsuya Chiba.

The lodges are fully furnished and there are art works and paintings of cats by both artists inside the lodges

**OPEN:** Apr-Oct ※Reservation required

**Fee:** Island lodge/White lodge (up to 5 people) . . . ¥9,000/night

Kitten lodge/Stray lodge/Tortoiseshell lodge (up to 6 people)

. . . . . ¥8,000/night

Tent site (1 plot, up to 4 people) . . . . . ¥1,500/night

**CLOSED:** varies depending on the season

**Parking:** none

**Tel:** Ishinomaki City Tourism Division 0225-95-1111





# Ajishima Island

Ajishima Island, with its cycling routes & fishing spots and so on can be enjoyed all year round. It's especially popular in summer, when many tourists come to see Aji Shirahama Beach, which has some of the clearest water in the whole of north Japan

## ***Dowameki Cape (viewed from the sea)***

A recommended spot at the southernmost point of the island giving gorgeous views of the Pacific Ocean. The shapes of the rocks, weathered by years of wind and water, are also well worth checking

### Access

#### **[To wharf]**

Train/Miyako Bus from JR  
Ishinomaki Station  
Take Yamashita Kadonowaki  
Route, journey time 15mins  
Get off at Kadonowaki 2-chome  
Car/20mins from Sanriku  
Expressway Ishinomaki Kanan Exit(11)

#### **[Wharf to Ajishima Island]**

60mins on Ajishima Line boat

(¥1,340 one way)

Ishinomaki Oshika Branch Office Community Promotion Section

0225-45-2114



**Aji Shirahama Beach**

This beach on the western side of the island boasts crystalline emerald green shallows and pure white sand. It has some of the clearest waters in the whole of Tohoku



**Statue of Bering**

Bering is the famous Danish explorer for whom the Bering Strait is named. The statue was erected by the islanders to commemorate Bering stopping off at the island while on the voyage in which he discovered the Bering Strait



# Ishinomaki's Gourmet Delights

Enjoy the finest seafood, caught from the Sanriku Kinkasan Offshore Fishing Ground, one of the three best in the world



## Mackerel Stock Ramen

A specialty of Ishinomaki, this noodle dish is served in a delicious stock made from mackerel caught from the Ishinomaki area, and has a flavorful yet light taste (restaurant info→P36)

## Ishinomaki Yakisoba (Japanese fried noodles)

Ishinomaki yakisoba proved popular in a Japanese fast food competition. The noodles are fried in a tasty fish stock, Ishinomaki-style. The more you eat, the more you get the flavors of the sea, and you'll be hooked!



## Ishinomaki Deluxe Kinka Sushi

If you want to sample the best of what the Sanriku Kinkasan Offshore Fishing Ground has to offer, sushi is the way to go! We use a selection of the freshest seafood landed here at Ishinomaki



## Ishinomaki Premium Kinka Seafood Rice Bowl

A mountain of sashimi of the season laid on fluffy white rice. ¥2,500 may sound expensive, but the quality and flavor are well worth it!

We guarantee your satisfaction, a galaxy of flavors that you just can't find in the big city





# Special Products of Ishinomaki

'Blue Ocean' 'Green Mountains' 'Eternal River'

*We are proud of our Ishinomaki products  
that include wonderful seafood  
and delicate crafts*

## Locally Brewed Sake

Ishinomaki sake has an ideal balance of sweetness and acidity from its rice base. Its smooth clean flavor goes extremely well with seafood, so try it with sushi or sashimi



## Oysters

Miyagi Prefecture in the east and Hiroshima Prefecture in the west are famous all over Japan for oysters. Ishinomaki's oysters are especially good because of the clean and cold ocean environment in which they grow



## Sendai Beef Katsuhiko-go

'Katsuhiko-go' beef is from the strain of the famed Shigehiro breed of cow and is one of the symbols of the very high-quality Sendai beef brand

## Sasa kamaboko *boiled fish paste cake*

Famous as a specialty of Miyagi Prefecture, Ishinomaki's kamaboko is shaped like a sasa leaf, and uses only the best ingredients for a gourmet taste experience



## Kinka brand

Ishinomaki Fish Market established this premium local brand as a business venture. The fish currently in this brand are Kinka Mackerel, Kinka Bonito and Kinka Coho Salmon, the pinnacle of quality from the port city of ISHINOMAKI

## Scallops

Ishinomaki is one of the best areas for scallops. You can enjoy them as fresh sashimi or sautéed in butter



## Sea-squirt

Sea-squirts are nicknamed 'pineapple of the sea' and are in season from early spring to summer. Try it as sashimi, vinegared, steamed or smoked. Quite an adventure!



## Cod Roe

Ishinomaki is one of the major producers of cod roe in Japan. Popular as a gift, different companies have devised their own individual recipes, maybe pickled in wine, miso or sake lees



## Ishinomaki Tomatoes

Ishinomaki produces more tomatoes than any other city in Miyagi. The tomatoes are as sweet as fruit and extremely fresh



## Ogatsu Stone

The deep black color of Ogatsu stone has been compared to the black sheen of ladies' hair. We produce inkstones for calligraphy from this stone, and more recently tableware, which adds greatly to the presentation of good food





# Restaurants

- Promoting Local Produce & Consumption

Ishinomaki is a treasure trove of delicious ingredients, in particular seafood from the Sanriku Kinkasan Offshore Fishing Ground, one of the 3 best in the world, and it also has the expert chefs to create magic in the kitchen using them



Maps of participating restaurants available throughout the city



## Central Ishinomaki

<b>Aizawa Store</b>	retail store	P49 D-3
2-4-36 Tachimachi Ishinomaki		0225-22-1820
<b>Ajisai Shin'ya</b>	Japanese	P49 D-3
2-5-45 Tachimachi Ishinomaki		0225-93-5515
<b>Ajido Ippai</b>	sushi, Japanese	P49 D-4
2-1-9 Tachimachi Ishinomaki		0225-22-2672
<b>Awano Kamaboko Store</b>	retail store	P49 D-6
1-9-11 Chuo Ishinomaki		0225-96-1232
<b>Izakaya Kuishinbo</b>	izakaya (Japanese food & drink)	P49 D-3
2F 1-6-8 Tachimachi Ishinomaki		0225-22-7016
<b>Izakaya Rokumonsen</b>	Japanese	P49 D-4
2-3-10 Tachimachi Ishinomaki		0225-93-3100
<b>Ishinomaki Genki Ichiba</b>	retail store, restaurant	P50 F-5
2-11-11 Chuo Ishinomaki		0225-98-5539
<b>Ishinomaki Shenron</b>	ramen	P49 C-2
Ohashi Building 1F 3-6 Iseba Ishinomaki		0225-90-3889
<b>Unagi-kappo Yahataya</b>	Japanese	P50 E-4
2-8-23 Chuo Ishinomaki		0225-22-0138
<b>Omoriya</b>	Japanese	P49 C-2
12-25 Kokucho Ishinomaki		0225-22-4117
<b>Restaurant Shochiku</b>	Japanese	P50 E-5
2-7-23 Chuo Ishinomaki		0225-96-4896
<b>Asahien Tea Shop</b>	retail store	P51 D-3
10-8 Asahicho Ishinomaki		0225-22-2887
<b>Kappo Stall Matsubaru</b>	Japanese	P49 C-4
1-5-23 Haguro Ishinomaki		0225-98-8125
<b>Kappo Takikawa</b>	Japanese	P50 E-5
1-13-13 Chuo Ishinomaki		0225-22-1138
<b>cafe Grain</b>	cafe	P49 C-2
12-25 Kokucho Ishinomaki		0225-25-7781

<b>Cafe Ren</b>	cafe	P49 C-3
2-7-26 Tachimachi Ishinomaki		070-1141-5238
<b>Curry Shop Disco</b>	restaurant	P50 F-4
COMMON-SHIP Hashidori 2-8-9 Chuo Ishinomaki		080-4648-2694
<b>Gingyokusui</b>	Japanese	P50 E-4
2-2-2 Chuo Ishinomaki		0225-93-2263
<b>Kushiage Hohoemi</b>	restaurant	P50 F-4
COMMON-SHIP Hashidori 2-8-9 Chuo Ishinomaki		090-4883-4321
<b>Keishoan</b>	Japanese kaiseki cuisine	P51 C-3
3-1-12 Izumicho Ishinomaki		0225-95-3399
<b>Casual Restaurant Funaya</b>	Japanese	P49 C-3
1-22 Kokucho Ishinomaki		0225-95-6492
<b>Seafood Toriko</b>	Japanese	P50 F-3
2-5-13 Chuo Ishinomaki		0225-93-2727
<b>Seasonal Food Imamura</b>	restaurant	P50 E-5
2-7-2 Chuo Ishinomaki		0225-90-3739
<b>Shimazu Koji Store</b>	retail store	P50 F-1
3-24 Asahicho Ishinomaki		0225-22-1708
<b>Seafood Cuisine Tomofukumaru</b>	Japanese	P50 E-5
1-15-8 Chuo Ishinomaki		0225-22-2851
<b>Janome Sushi</b>	sushi, Japanese	P49 D-5
1-6-7 Chuo Ishinomaki		0225-22-6676
<b>Fresh Izakaya Goku</b>	izakaya (Japanese food & drink)	P49 D-3
2-5-41 Tachimachi Ishinomaki		0225-23-5821
<b>Shiraken Kamaboko Shop</b>	retail store	P49 D-3
2-4-29 Tachimachi Ishinomaki		0225-22-1842
<b>Sukeroku Sushi</b>	sushi	P49 D-4
1-3-7 Tachimachi Ishinomaki		0225-95-5208
<b>Sushi Horai</b>	sushi	P49 E-2
1-3 Sengokucho Ishinomaki		0225-22-1258
<b>Ishinomaki Dining Orino</b>	Italian	P49 C-3
2F 2-7-28 Tachimachi Ishinomaki		0225-24-6541
<b>Chinese Restaurant Chugoku Hanten</b>	Chinese	P50 E-2
2-10 Sengokucho Ishinomaki		0225-93-8111
<b>Chinese Restaurant Hibari</b>	Chinese	P50 E-4
2-2-16 Chuo Ishinomaki		0225-94-5178
<b>Teppan WHITE</b>	restaurant	P50 F-4
COMMON-SHIP Hashidori 2-8-9 Chuo Ishinomaki		0225-25-5569
<b>Trattoria Azalea</b>	Italian	P50 E-2
2-10 Sengokucho Ishinomaki		0225-93-8111
<b>Toribun</b>	Japanese	P50 E-5
2-7-18 Chuo Ishinomaki		0225-22-0521
<b>Japanese Restaurant Sekitei</b>	Japanese	P50 E-2
2-10 Sengokucho Ishinomaki		0225-93-8111
<b>Food and Drink Mizusawayama Motchan</b>	Japanese	P49 D-4
2-3-27 Tachimachi Ishinomaki		0225-22-2935
<b>Pizza &amp; Pasta Bar Belcolpo</b>	Italian	P50 E-5
2-1-18 Chuo Ishinomaki		0225-95-9170
<b>Hitakami Restaurant</b>	Western	P49 D-3
asatte 1F 2-5-5 Tachimachi Ishinomaki		0225-98-4675
<b>Fuki Sushi</b>	sushi	P49 D-2
8-6 Iseba Ishinomaki		0225-96-8502
<b>Makiishi</b>	Japanese	P50 F-4
2-5-10 Chuo Ishinomaki		0225-93-4680
<b>Manrakudo</b>	sweets	P49 C-3
2-4-23 Tachimachi Ishinomaki		0225-22-3348
<b>Miyuki</b>	Japanese	P49 D-6
1-10-22 Chuo Ishinomaki		0225-96-4787

<b>Yakitori Hiro</b>	restaurant	P50 F-4
COMMON-SHIP Hashidori 2-8-9 Chuo Ishinomaki		080-5576-7771
<b>Yosuko</b>	Chinese	P51 D-3
2-1-1 Fudocho Ishinomaki		0225-96-1717
<b>Food and Drink Bozu</b>	Japanese	P49 D-5
1-6-7 Chuo Ishinomaki		0225-93-0902
<b>Food and Drink Notto</b>	Japanese	P49 E-5
Chuo Building 1F 2-1-16 Chuo Ishinomaki		0225-22-3188
<b>Japanese Restaurant Ishimori</b>	Japanese	P50 F-4
2-10-17 Chuo Ishinomaki		0225-22-6565
<b>Restaurant La Lorette</b>	French	P50 E-2
2-10 Sengokucho Ishinomaki		0225-93-8111
<b>Waki AiAi</b>	izakaya (Japanese food & drink)	P49 C-2
3-19 Iseba Ishinomaki		0225-96-9545

## Hebita, Okaido, Nakazato areas

<b>Ajidokoro Hamacho</b>	Japanese	P51 B-3
4-15-15 Megumino Ishinomaki		0225-93-5150
<b>Koma Sushi</b>	sushi	P51 C-3
2-2-3 Shimizucho Ishinomaki		0225-96-6345
<b>Sakae Sushi</b>	sushi	P51 C-3
18-9 Hebitanakazone Ishinomaki		0225-22-6651
<b>Sanpuku</b>	sushi	P51 C-3
3-10-45 Izumicho Ishinomaki		0225-22-4144
<b>Shiraken Kamaboko Store Kadonowaki Factory Direct Sales</b>	retail store	P51 B-3
31-1 Kadonowaki-aza-Myojin Ishinomaki		0225-95-2845
<b>Sushi Ippachi</b>	sushi	P51 C-3
3-4-10 Nakazato Ishinomaki		0225-94-1800
<b>Sushi, Kappo Takenoura (Hishokaku)</b>	sushi, Japanese	P51 C-3
1-19-6 Yamashitacho Ishinomaki		0225-95-2424
<b>Sushi Haru</b>	sushi	P51 C-3
19-7 Hebita-aza-Shinzonefdera Ishinomaki		0225-95-8281
<b>Take Sushi</b>	sushi	P51 B-3
70-2 Kadonowaki-aza-Motourayashiki Ishinomaki		0225-22-4414

## Minato, Watanoha areas

<b>Ajidokoro Miraku</b>	Japanese	P52 E-4
8-7 Mangokucho Ishinomaki		0225-24-0218
<b>Kakigoya Watanoha</b>	BBQ	P52 E-4
75-5 Watanoha-aza-Iwaida Ishinomaki		0225-24-5640
<b>Saitaro Canteen</b>	Japanese	P51 D-4
2-12-3 Sakanamachi Ishinomaki		0225-96-2364
<b>Long Beach House</b>	Western	P52 E-4
47-1 Watanoha-aza-Hamasonenoichi Ishinomaki		0225-98-4714

## Oshika area

<b>Kogane Sushi</b>	sushi, Japanese	P56 C-4
Oshika Norengai B-1, 1-12 Minatogawa Ayukawahama Ishinomaki		0225-45-2104

## Kahoku area

<b>Abe Cake shop</b>	sweets	P54 E-4
8 Ainoya-aza-iinokawamachi Ishinomaki		0225-62-3126
<b>Kappo Takadai</b>	Japanese	P53 D-4
205-7 Ainoya-aza-iinokawamachi Ishinomaki		0225-62-3124
<b>Kawanokami-Hyappokan Kome Cafe</b>	cafe	P53 D-4
343-1 Kofunakoshi-aza-Yamahata Ishinomaki		0225-24-6625
<b>Japanese Restaurant Kobayashi</b>	Japanese	P54 E-4
135-1 Ainoya-aza-iinokawamachi Ishinomaki		0225-62-3106
<b>Japanese Restaurant Takatoku</b>	Japanese	P53 D-4
89 Ainoya-aza-iinokawamachi Ishinomaki		0225-62-3148
<b>Japanese Restaurant Kikaku</b>	Japanese	P54 E-4
171 Ainoya-aza-iinokawamachi Ishinomaki		0225-62-3381
<b>Chinese Restaurant kikka</b>	Chinese	P54 E-4
70-2 Ainoya-aza-iinokawamachi Ishinomaki		0225-62-2701
<b>Chinese Restaurant Fukuryu Hanten</b>	Chinese	P53 D-4
446 Kofunakoshi-aza-Yamahata Ishinomaki		0225-62-2223
<b>Western Confectionery Yamaki</b>	sweets	P54 E-4
43 Ainoya-aza-iinokawamachi Ishinomaki		0225-62-3131

## Kanan area

<b>Restaurant on the Hill Choco-le'a</b>	Western	P53 C-5
2-14-23 Sue-aza-Shirasagidai Ishinomaki		0225-73-5154
<b>Japanese Restaurant Yashiro</b>	Restaurant	P53 B-3
94-3 Wabuchi-aza-Wabuchimachi Ishinomaki		0225-72-3053

## Monou area

<b>Fresh fish &amp; Sake Wabisuke</b>	sushi, bar	P53 C-2
26-4 Nakatsuyama-aza-Nakatsuyama Monoucho Ishinomaki		0225-76-5850
<b>Chinese Restaurant Kotobuki</b>	Chinese	P53 C-2
29-3 Azamachi Nakatsuyama Monoucho Ishinomaki		0225-76-3180
<b>Tonkatsu Taihei</b>	Japanese	P53 C-2
51 Nakatsuyama-aza-Ejita Monoucho Ishinomaki		0225-76-2429
<b>Monou Japanese Sweets Onuma Honpo</b>	retail store	P53 C-3
119 Kyuuninmachi-aza-Higashimachi Monoucho Ishinomaki		0225-76-3213
<b>Japanese Dining Aoi</b>	Japanese	P53 C-2
173-2 Nakatsuyama-aza-Yagi Monoucho Ishinomaki		0225-76-1321

## Ogatsu area

<b>Koyo</b>	Japanese	P55 C-4
2-25 Kamiogatsu Ogatsucho Ishinomaki		0225-61-3540
<b>Denpachi Sushi</b>	sushi	P55 C-4
2-25 Kamiogatsu Ogatsucho Ishinomaki		080-5575-9976



# Ishinomaki GIFT SHOPS & RESTAURANTS



Recommended café terrace  
A great view of the manga  
museum & the Kitakami River



## ISHINOMAKI GENKI ICHIBA

Opened in June 2017, Ishinomaki Genki Ichiba is divided into the 1st floor, a shopping area selling fresh Ishinomaki seafood, processed marine products, fruit & vegetables and other gifts, and the 2nd floor, a food court with great views of the Kitakami River where you can enjoy Ishinomaki-style food. There is lots of parking available next to the market. We are looking forward to seeing you soon!

Address: 2-11-11 Chuo Ishinomaki  
Telephone: Ishinomaki Genki Ichiba 0225-98-5539  
OPEN: 1F Shopping Floor 9:00~19:00  
2F Food Court 11:00~20:00  
(last order 19:30)

Open every day (please check for hours at New Year, national holidays and o-Bon summer season)

MAP P50 F-5



Checking out the fresh fish!



Fresh vegetables & local sake  
also sold as well as seafood



## MICHI NO EKI JOBON NO SATO SERVICE STATION

Fresh vegetables and local produce for sale, and there is also a restaurant with an all you can eat buffet. Popular snacks such as the Ishinomaki o-den burger, chikuwa set and ¥10 mini bean cakes are also sold in the fast food space. There is also a bathing facility 'Futago no Yu' which includes a ferruginous chloride hot spring, a rarity for Miyagi

Address: 1-1 Kofunakoshi-aza-  
Futagokitashimo Ishinomaki  
Tel: Jobon no Sato 0225-62-3670  
OPEN: every day  
(no bathing on the fourth  
Tuesday of the month)

MAP P53 D-4



chikuwa set



¥10 mini bean cakes



## OGATSU TANAKOYAGAI

The Ogatsu area suffered catastrophic damage from the 2011 tsunami, and the 10-store Tanakoyagai is currently the only shopping section in the area. Processed marine products & Ogatsu stone goods (calligraphy inkstones, tableware) are sold here, and you can eat Ogatsu's delicious seafood at the restaurants (sea urchin, conger eel, scallops, sea squirt etc)

Address: 2-25 Kamiogatsu  
Ogatsucho Ishinomaki  
Phone: Ishinomaki Kahoku Commerce &  
Industry Association 0225-62-3161  
OPEN: varies according to store  
CLOSED: varies according to store

MAP P55 C-4



## OSHIKA NORENGAI

This shopping area is made up of 12 stores that were victims of the 2011 tsunami. As well as souvenirs, you can eat delicious fresh seafood caught from the rich Kinkasan Offshore fishing ground

Address: 1-12 Minatogawa Ayukawahama  
Ishinomaki  
Phone: Ishinomaki Oshika Inai Commerce  
& Industry Association  
0225-45-2521  
OPEN: varies according to store  
CLOSED: varies according to store

MAP P56 C-4



# Educational Tourism in Ishinomaki

There are places in Ishinomaki where you can learn about fishery & agriculture, the local history & culture, and also see and learn about the earthquake & tsunami of 2011 and subsequent reconstruction efforts. Going through the disaster has inextricably linked all these places together. Please make use of the valuable lessons learned here and the experiences people have gone through to learn about natural disasters here and the work towards recovery

## Facilities & programs

where you can learn directly about the disaster & disaster prevention

### Guided tours of the tsunami-hit area in Ishinomaki

A volunteer guide will board your bus or car and guide you around the areas of the city worst-hit by the tsunami, also talking about individual experiences and disaster prevention measures. Walking tours around central Ishinomaki also available (interpreters must be provided by customer)

▪ **Enquiries, booking**  
Ishinomaki Tourism Association ☎0225-93-6448

### Ishinomaki Community & Info Center (ICIC)

Staff always on hand to talk about the disaster & reconstruction projects



**ICIC**  
Native English-speaking staff available (phone for availability)  
2-8-11 Chuo Ishinomaki  
☎0225-98-4425  
• Open 9:30~18:00  
• Closed Tuesdays (or the following day if Tue is a holiday), Dec 30-Jan 2

P50 F-4



**ICIC Kitakami**  
A popular meeting place for the locals  
41-2 Jusanhamaza-aza-Maruyama Kitakamicho Ishinomaki  
☎0225-98-9660  
• Open 9:00~17:00  
• Closed Mondays (or the following day if Mon is a holiday), Dec 29-Jan 3

P55 B-3



**ICIC Ogatsu**  
Various exhibits in a trailer house  
2-36 Kamiogatsu Ogatsucho Ishinomaki  
☎0225-25-6028  
• Open 9:00~17:00  
• Holiday Tuesdays (or the following day if Tue is a holiday), Dec 29-Jan 3

P55 C-4

### Ishinomaki Newssee



The disaster from the local newspaper's point of view

2-8-2 Chuo Ishinomaki  
☎0225-98-7323  
• Open 10:00~18:00 (Closes earlier in winter)  
• Closed Mondays, New Year

P50 E-4

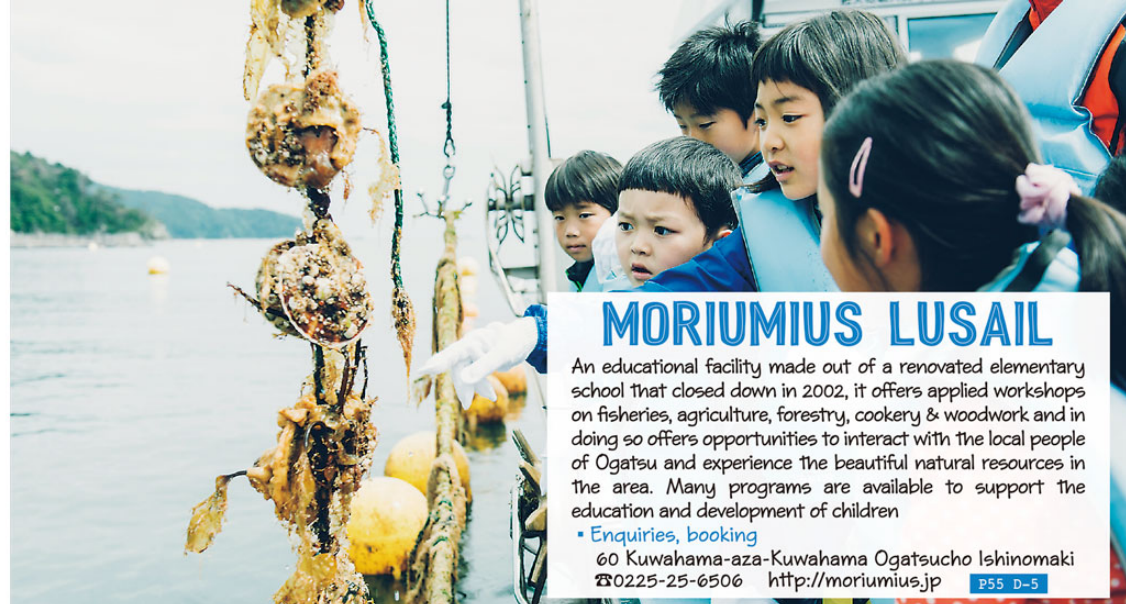
### Minamihamamatsu Tsunagukan (3.11 Memorial Hall)



Includes a mini movie theater showing information on the disaster (English version available)

3-1-24 Minamihamamatsu Ishinomaki Next to 'Ganbaro! Ishinomaki' (Never give up, Ishinomaki!) signboard  
☎0225-98-3691 (Ishinomaki Future Support Association)  
• Open Sat, Sun, holidays 10:00~15:00  
Fri 13:00~15:00

P51 C-4



## MORIUMIUS LUSAIL

An educational facility made out of a renovated elementary school that closed down in 2002, it offers applied workshops on fisheries, agriculture, forestry, cookery & woodwork and in doing so offers opportunities to interact with the local people of Ogatsu and experience the beautiful natural resources in the area. Many programs are available to support the education and development of children

▪ **Enquiries, booking**  
60 Kuwahama-aza-Kuwahama Ogatsucho Ishinomaki  
☎0225-25-6506 <http://moriumius.jp>

P55 D-5



Ogatsu Rose Factory Garden  
Volunteers accepted  
(good for study trips, internships)



Disaster prevention walking tours of the city  
(AR app used to aid understanding)

## Hands-on Active Learning Programs



Picking blueberries at a tourist farm  
(late June to late July)



Ishinomaki Farm organic farming participatory program

The programs shown here are just a few of many. Please check the Active Learning Programs educational tourism guide book for more details and booking information



### ▪ Applications, enquiries

Ishinomaki Area Tourism Promotion Organization

2-11-21 Chuo Ishinomaki inside Kawamachi Community Center  
TEL 0225-98-8285 FAX. 0225-98-8019





## CANOE SUP BBQ

## ROWING TO HAMAGURI HAMA!!

We at Hamaguri Hama want more people to experience the joy of seaside activities and put a smile on their faces. We offer various nature-based programs such as Canadian canoeing and SUP (stand-up paddle surfing)

Hamanone Association  
Nature-based learning, BBQ etc...  
18 Momonoura-aza-Hamagurihama Ishinomaki  
TEL 0225-90-2909  
<http://www.hamaguridou.com/>



## Oshika Area

### Reborn Art Festival

Organized around the theme of rebirth and recovery, this is a festival based in and around the Oshika Peninsula with modern art exhibits, music concerts and food events

Famous artists and chefs from Japan and from all over the world come to Oshika every year and work with the local volunteers to get the message out to the world about how cool Oshika is

Enquiries: Reborn-Art Festival Executive Committee Office : ☎0225-90-4726



White Deer (Oshika) (Kohei Nawa)



**A** Oshika Gobansho Park

Address : Kurosaki Ayukawahama Ishinomaki  
Contact : Ishinomaki Oshika Branch Office Community Promotion Section  
☎0225-45-2114



**B** Oshika Norengai Shopping Street (post-disaster temporary facility)

Address : 1-12 Minatogawa Ayukawahama Ishinomaki  
Enquiries : Ishinomaki Tourism Association Oshika Office  
☎0225-45-3456  
OPEN : varies according to store  
CLOSED : varies according to store



**C** Oshika Family Village Caravan Site

Address : 1-1 Komagamine Ayukawahama Ishinomaki  
Enquiries : Oshika Family Village Caravan Site  
☎0225-45-3420



**D** Bering Statue

Address : Aijhamajinai Ishinomaki  
Contact : Ishinomaki Oshika Branch Office Community Promotion Section  
☎0225-45-2114



**E** Aji Shirahama Beach

Address : Aijhamajinai Ishinomaki  
Enquiries : Ishinomaki Oshika Branch Office Community Promotion Section  
☎0225-45-2114



**F** Dowameki Cape Lighthouse

Address : Ajishima Island  
Enquiries : Ishinomaki Oshika Branch Office Community Promotion Section  
☎0225-45-2114



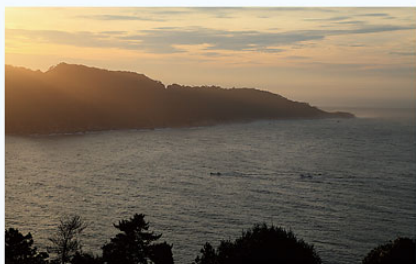


# Oshika

Views of the Oshika Peninsula  
from Gobansho Park



Sunrise at Ayukawa Port



Kinkasan Island in the morning



The ocean lit up by the sun



Sunset over the Oshika Peninsula



## Touring the Oshika Area

Enjoy the natural beauty  
of the area with this  
short driving course



Oshika Family Village Caravan Site

An incredibly beautiful location with views of Kinkasan Island! Fully equipped with cooking facilities, shower room, bathroom & laundromat! Tent site fees from ¥3,000/site. Lodge accommodation from ¥15,000



Oshika Norengai Shopping Street  
(post-disaster temporary facility)

The place to go for a delicious lunch! 12 stores that were damaged by the tsunami are now located here. Delicious locally caught fresh seafood can be eaten here!!



Oshika Gobansho Park

The excellent and expansive views from here are not only beautiful, but were strategically used by the feudal domain of Sendai in the Edo era as a lookout for hostile ships. The main observation point gives you a stunning 360° panoramic view with the Pacific Ocean ahead and the Oshika Peninsula behind.



Dowameki Cape Lighthouse

20mins walk from Futawatashi-hama, you will get a wonderful view of the Pacific Ocean from by the lighthouse. On the way there, take some time to appreciate the natural rock formations shaped over long years by the elements



Aji Shirahama Beach

One of the most beautiful beaches in Tohoku with incredibly clear water. The cobalt blue ocean and pure white sand will enchant you any time of the year



Bering Statue

Bering is Danish explorer who gave his name to the Bering Strait. He stopped off at Ajishima while on an exploratory journey and spent some time with the people of the island. This statue commemorates that

Boat trip to explore  
Ajishima Island



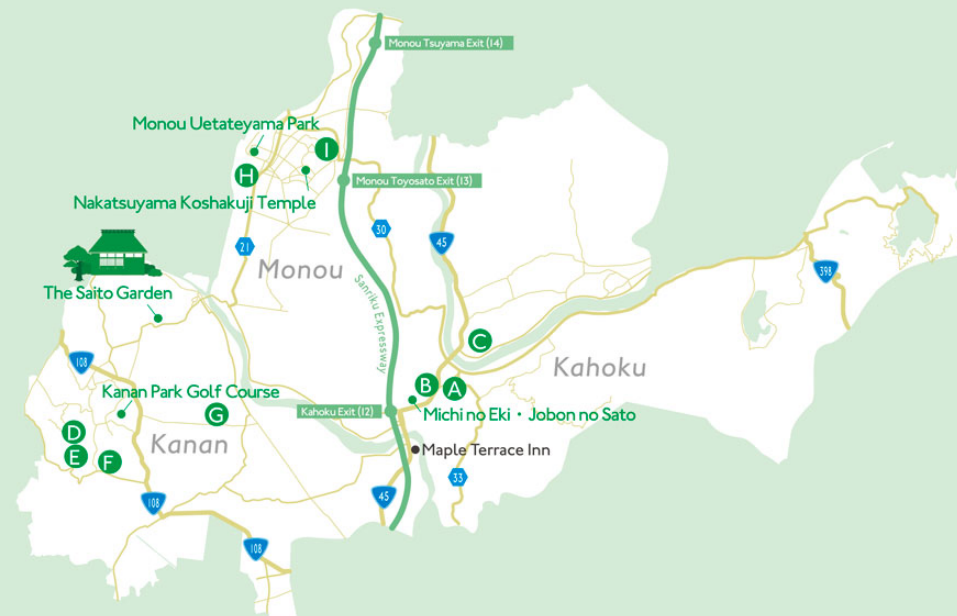
## || Kanan, Monou, Kahoku Areas ||

### The Saito Garden (Kanan)

Created by the landowner Zen'emon Saito, the 9th of his line, at the end of the 19th century, the garden fits perfectly in the space between the residence and the hilly area behind

It is designated as a national site of scenic beauty. Some areas cannot be viewed because of renovation work (estimated to be completed in 2020)

Address : 73 Kurosawa Maeyachi Ishinomaki  
Enquiries : Ishinomaki Board of Education Lifelong Learning Section  
☎0225-95-1111



**A Oppagawa Kasen Sports Park**

Address : 383-1 Kofunakoshi-aza-Yamahata Ishinomaki  
Enquiries : Oppagawa Kasen Sports Park  
☎0225-62-3235



**B Kawa no Kami Hyappyokan**

Address : 343-1 Kofunakoshi-aza-Yamahata Ishinomaki  
Enquiries : Kawa no Kami Hyappyokan  
☎0225-24-6625  
OPEN 11:00 ~ 17:00 Closed : Mondays, New Year  
Parking : parking available (please call for info)



**C Hachimanyama Kamegamori Park**

Address : 43Ainoya-aza-Kyuukaikomae Ishinomaki  
Enquiries : Kanan Branch Office Community Promotion Section  
☎0225-72-2114



**D Kolobockle House**

Address : 37-1 Kitamura-aza-Hebigasawa Ishinomaki  
Enquiries : Kanan Branch Office Community Promotion Section  
☎0225-72-2114



**E Prefectural Nature Park Asahiya**

Address : Asahiya Kitamura Ishinomaki  
Enquiries : Kanan Branch Office Community Promotion Section  
☎0225-72-2114



**F Asahiya Drive Inn**

Address : 2-3-1 Kitamura-aza-Makugasaki Ishinomaki  
☎0225-73-2361  
Check-in : 15:00/Check-out : 10:00  
Open every day



**G Yasaikko**

Address : 137 Sankoukukita Wabuchi Ishinomaki  
Enquiries : Kanan-chiku Nosanbutsu Chokubaijo Tomonokai  
☎0225-72-2233  
OPEN : Wed, Sat, Sun 9:00~17:00



**H Monou Information Plaza**

Address : 43-1 Shikenmae Nakatsuyama Monouchi Ishinomaki  
Enquiries : Ishinomaki Monou Product & Tourism Association  
☎0225-76-1898  
Closed : Wednesdays, 12/31, 1/1



**I Monou Center**

Address : 164 Jonai-aza-Higashimine Monouchi Ishinomaki  
Enquiries : Monou Center  
☎0225-76-4565



## Touring the Monou Area

Get the full Monou experience all in one trip

2



Monou Information Plaza



1



Uetateyama Park

3

A sports park overlooking the Kitakami River, this contains park golf courses, tennis courts and a softball pitch



Koshakuji Temple

Built in 1342, this 670-year-old temple is known for its beautiful ceiling paintings, called 'hana-tenjo.' They were painted by Ishu Kikuta, one of the 4 great painters of the Date clan

122 Jonai Nishimine Monouchi Ishinomaki  
☎0225-76-4411

4



Monou Center

Multi-purpose facility including a campsite & adventure playground and sports facilities such as a baseball pitch, tennis courts & a gym

Momajiro's kibidango millet dumplings are a must try! Perfect for an in-car snack!



Provides local tourist information and sells Monou products such as sweets made of millet, Monou tea & Monou soba noodles

## Touring the Kahoku Area

Spoil yourself with the great outdoors, gourmet food & hot springs

2



Local Specialty: Ramen in Mackerel Soup

Devised in collaboration with Ishinomaki Senshu University, this noodle dish is focused around its tasty soup made from mackerel. Its delicious but light flavor has earned it many fans who come back for it again & again



3



Hachimanyama Kamegamori Park

A park located inside Hachiman Shrine. The 'Viewpoint Plaza' has stunning views of the majestic Kitakami River and the Ou Mountain range in the distance



4



Kawa no Kami Hyappyokan

Selling homemade bread, cheese cake and 'ganzuki' sweet steamed bread etc. Takeout available

Kawa no Kami coffee

Monou Tea



Exquisitely roasted and served in a cup from the Minomada kiln! The cookies are made with organic wheat

5

3mins



Michi no Eki \* Jobon no Sato

A facility combining a produce shop selling locally grown seasonal vegetables and Futago no Yu, a bath with an uncommon ferruginous chloride hot spring

Green tea from Monou, Ishinomaki. The smooth aftertaste after the first astringent sip will add to your healing mood, as will the Nambu ironware implements



# Touring the Kanan Area

Visiting Kanan's mysterious power spots & traditional places

1



Sosenji Temple

A Shingon sect temple located in the northern part of Asahiyama Park. A popular place for tourists to the area to visit, you can find cedars & ginkgo trees, some as old as 800 years, as well as ancient stone monuments.  
48 Kitamura-aza-Kamio Iskinomaki ☎0225-72-2156

5mins

2



Saito Garden

Zen'uemon Saito, the 9th generation of the Saito family of landowners created this garden at the end of the 19th century. Beautifully laid out between the mansion and the hilly area behind, it is worth a look at any time of year.

10mins

3



Asahiyama Drive Inn

A homely, relaxing inn. You will be served lots of good food made from locally produced ingredients that is both delicious & nutritious. No chance of going hungry here!



The Japanese style garden wall is a great place for photos. If you are lucky, you might run into one of the famous local cats!

2



Asahiyama Prefectural Park

With a height of 174m and 3ha of grassy mountaintop, this is a wonderful place to relax in the warm sun and look out at the surrounding countryside. Asahiyama Kannondo, housing a buddhist statue, is a popular place to take a break from your hike.

10mins

3



Colobockle House  
(Asahiyama Agricultural Experience Training Institute)

This log cabin-style educational facility is located in the woods and has a campsite. Available for use for groups of 10 or more.

1



Yasaikko

Fresh vegetables & flowers, pickles & farmhouse food like mama used to make. Homemade bread & chiffon cake made from rice flour are also popular.



10mins  
10mins walk from the car park



Enjoy the wide outdoors and nature's blessings





## Kitakami/Ogatsu Area

### View from Osuzaki lighthouse

This lighthouse standing on the eastern tip of the Ogatsu Peninsula overlooks the Pacific Ocean and has long been regarded as a symbol of safety for the local fishermen. The coastline seen from

the lighthouse is shaped like a heart, and in 2018 was designated a 'lighthouse of love,' a place where a couple could gaze out and envision their future together



**A Tsurishi Shrine**

Address : Jusanhama-aza-Shobuta  
Kitakamicho Ishinomaki  
Enquiries : Tsurishi Shrine  
☎0225-25-6345



**B Ishinomaki Kitakami Tourist & Local Produce Center**

Address : 1 Jusanhama-aza-Toda  
Kitakamicho Ishinomaki  
Enquiries : Ishinomaki Tourism  
Association  
☎0225-98-9861



**C Oiwake Onsen (hot spring)**

Address : 1 Onagawa-aza-Omine  
Kitakamicho Ishinomaki  
Enquiries : Oiwake Onsen  
☎0225-67-3209  
Ishinomaki Tourism Association  
HP : <http://www.i-kanko.com/archives/777>



**D Osuzaki Lighthouse**

Address : Osu Ogatsucho Ishinomaki  
Enquiries : 2nd Regional Japan Coast  
Guard Headquarters  
☎022-363-0111



**E Ishi Shrine・Hayama Shrine**

Address : 9 Ohama-aza-Ohama  
Ogatsucho Ishinomaki  
Enquiries : Hayama Shrine  
☎0225-58-3355



**F Shirogane Shrine**

Address : 122 Kuwahama-aza-Hazaka  
Ogatsucho Ishinomaki  
Enquiries : Shirogane Shrine  
☎0225-58-3355



**G Ogatsu Rose Factory Garden**

Address : 24-3 Ogatsucho-aza-  
Misosaku Ishinomaki  
Enquiries : Ogatsu Hana Monogatari  
☎0225-23-2551



## Touring the Ogatsu Area

1



Ishi Shrine • Hayama Shrine

Located on the 352m high Mt Ishimine, this shrine worships the giant boulder on the mountain top, the incarnation of a god. Along with nearby Hayama Shrine, members of the Date feudal clan would visit here to worship

Romantic drive from the rose garden to Osuzaki lighthouse



Ogatsu Rose Factory Garden

Free garden where you can view many kinds of roses, herbs & seasonal flowers. There are also talks from people who went through the 2011 earthquake & tsunami about their experiences and disaster prevention

10mins + 10mins

2



Shirogane Shrine

The vermillion torii gateway that suddenly appears in the midst of the forest has an otherworldly feel. Stunning coastal views can be found near the shrine



5mins + 5mins

3



Osuzaki Lighthouse

Known as the 'Lighthouse of Love,' this is a great place for a date!

2



Ogatsu Tanakoyagai

5mins

Tsunami-damaged stores relocated here, where you can try Ogatsu's unparalleled seafood. Scallops, conger eel, sea urchin, Ogatsu has it all! 'Suzuri' calligraphy inkstones & tableware sold here, made of Ogatsu's famous black slate



Sea urchin on rice

Freshly caught sea urchin, cheap & delicious. They melt in your mouth!



Anago conger eel on rice

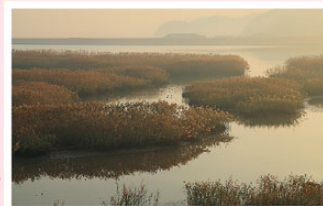
Mild fluffy white fish coated in a salty-sweet sauce and grilled crisp!

Ogatsu's peaceful mountain retreats and Osuzaki lighthouse, the 'Lighthouse of Love'

## Touring the Kitakami Area

Enjoy the gorgeous natural scenery of Kitakami to the fullest!

1



Kitakami River reed beds

10mins

Not only a beautiful view to pleasure your eyes, but the sound of the wind rustling through the reeds will soothe your ears, too

2



Kitakami Tourist & Local Produce Center

Tourist information & sales of local produce. Be sure to check out the pier on the river just outside, it's worth a look

3



Shirahama Beach

Beach equipped with bathrooms, showers and a rest area. Parking available

4



Kamiwarizaki

Place of stunning natural beauty, with wild rock crags battered by the ocean waves in the shifting sunlight

1



Maruyama Jizoson statue

This 3m high statue of Jizo, the guardian deity of children, has been standing here for 200 years!

2



Tsuri-ishi Shrine

Tsuri-ishi means hanging stone, and the huge rock here that hangs but never falls or fails has become a popular place for students to come and pray for success in exams



3



Oiwake Onsen hot spring

A hidden gem, this hot spring nestled in the mountains has a retro feel. The excellent food they serve includes treasures from both the mountains & the sea!





# List of hotels/accommodation



## Central Ishinomaki

<b>Ishinomaki Apartment Hotel</b>	Business Hotel	P51 D-3
1-15-25 Ekimaekitadori Ishinomaki		0225-23-2045
<b>Ishinomaki Grand Hotel</b>	Hotel	P50 E-2
2-10 Sengokucho Ishinomaki		0225-93-8111
<b>Ishinomaki Sunplaza Hotel</b>	Business Hotel	P50 E-3
1-7-23 Tachimachi Ishinomaki		0225-93-3311
<b>Casa de Costa</b>	Business Hotel	P51 C-3
1-2-39 Tamichicho Ishinomaki		0225-23-1331
<b>Kikuchi Ryokan</b>	Ryokan (Japanese inn)	P49 D-6
1-10-22 Chuo Ishinomaki		0225-22-1942
<b>Convenience Hotel Ayers Rock</b>	Business Hotel	P49 E-3
1-6-21 Tachimachi Ishinomaki		0225-23-5030
<b>Sakari Ryokan</b>	Ryokan (Japanese inn)	P49 C-2
4-7 Isenba Ishinomaki		0225-22-2050
<b>Sant Juan Village</b>	Business Hotel	P52 E-4
11-11 Watanoha-aza-Omori Ishinomaki		0225-25-1288
<b>Seaside Inn Ishinomaki</b>	Ryokan (Japanese inn)	P51 D-4
2-10-1 Matsunami Ishinomaki		0225-96-3866
<b>Shomonkan</b>	Ryokan (Japanese inn)	P49 C-2
2-23 Isenba Ishinomaki		0225-96-5288
<b>Suzuya Ryokan</b>	Ryokan (Japanese inn)	P51 C-3
1-15-33 Teizan Ishinomaki		0225-95-2686
<b>Weekly&amp;Monthly STAY FREE</b>	Business Hotel	P51 D-3
2-6-6 Kazuma Minami Ishinomaki		0225-96-9908
<b>Seiwa-so</b>	Guesthouse	P52 F-3
2-1 Sawada-aza-Maeyama Ishinomaki		0225-24-0040
<b>TAMA HOTEL</b>	Business Hotel	P51 C-3
16-4 Hebita-aza-Koumon Ishinomaki		0225-98-8188

<b>Value the Hotel Ishinomaki</b>	Business Hotel	P51 C-3
3-15-37 Minami Nakazato Ishinomaki		0225-92-7567
<b>Business Ryokan Duck</b>	Ryokan (Japanese inn)	P51 C-3
67-4 Hebita-aza-Shinshimonuma Ishinomaki		0225-22-3535-0225-93-3033
<b>FUTABA INN</b>	Business Hotel	P50 G-2
1-2-15 Sumiyoshicho Ishinomaki		0225-94-2922
<b>Hotel Parklight</b>	Business Hotel	P51 D-3
1-2-21 Ohashi Ishinomaki		0225-23-3512
<b>Hotel Pacific</b>	Business Hotel	P49 B-3
1-6-7 Hagurocho Ishinomaki		0225-95-0313
<b>HOTEL HAYASHIYA</b>	Business Hotel	P49 D-3
2-4-28 Tachimachi Ishinomaki		0225-22-0401
<b>Hotel Frontier</b>	Business Hotel	P51 C-3
3-8-35 Izumicho Ishinomaki		0225-94-6878
<b>Hotel Hot Inn Ishinomaki</b>	Business Hotel	P51 C-3
1-4-17 Okaido-kita Ishinomaki		0225-92-6111
<b>Hotel Route Inn Ishinomaki Kanan Inter</b>	Business Hotel	P51 C-3
2-14-2 Megumino Ishinomaki		0225-92-0075
<b>Hotel Route Inn Ishinomaki Chuo</b>	Business Hotel	P51 C-3
3-3-3 Okaido-kita Ishinomaki		050-5847-7551-0225-21-5808
<b>Mangoku-so</b>	Public Lodging House	P52 E-3
5-31 Nagaru-aza-Naka Ishinomaki		090-3648-8316
<b>Miura Ryokan</b>	Ryokan (Japanese inn)	P51 B-3
2-4-85 Kadowaki-aza-Nakayashiki Ishinomaki		0225-22-2018
<b>Guesthouse Shintate</b>	Guesthouse	P51 B-3
2-1-10 Shintate Ishinomaki		0225-93-3810
<b>Guesthouse Zuiko</b>	Guesthouse	P52 F-4
70-1 Hiesawa Momonoura Ishinomaki		0225-90-2341
<b>Momonoura Village</b>	Public Lodging House	P52 G-4
17 Momonoura-aza-Utoki Ishinomaki		0225-25-6870
<b>Guesthouse Hikari</b>	Guesthouse	P51 B-3
2-1-6 Shintate Ishinomaki		0225-93-3810
<b>Ryokan Komatsu-so</b>	Ryokan (Japanese inn)	P51 D-4
1-2-7 Midoricho Ishinomaki		0225-93-1515
<b>Ryokan Tochigi</b>	Ryokan (Japanese inn)	P49 C-2
2-12 Isenba Ishinomaki		0225-93-0510
<b>Long Beach House</b>	Guesthouse	P52 E-4
47-1 Watanoha-aza-Hamasonoichi Ishinomaki		0225-98-4714
<b>Japanese Hotel Park Inn Fujita</b>	Hotel	P51 D-3
2-8-6 Ohashi Ishinomaki		0225-22-2222

## Ogatsu Area

<b>Kameyama Ryokan</b>	Ryokan (Japanese inn)	P55 D-4
218-2 Osu-aza-Osu Ogatsucho Ishinomaki		0225-58-2025
<b>Zensho Ryokan</b>	Ryokan (Japanese inn)	P55 C-5
48-2 Mizuhama-aza-Mizuhama Ogatsucho Ishinomaki		0225-57-3109
<b>Guesthouse Choeikan</b>	Guesthouse	P55 D-4
222-3 Osu-aza-Osu Ogatsucho Ishinomaki		0225-58-3203
<b>MORIUMIUS LUSAIL</b>	Other	P55 D-5
60Kuwahama-aza-Kuwahama Ogatsucho Ishinomaki		0225-25-6506

## Kanan Area

<b>Guesthouse Asahiya Drive Inn</b>	Guesthouse	P53 B-5
2-3-1 Kitamura-aza-Makugasaki Ishinomaki		0225-73-2361
<b>Maple Terrace Inn</b>	Business Hotel	P53 D-5
57-1 Kanomata-aza-Isemae Ishinomaki		0225-25-4391

## Kitakami Area

<b>Village AOYA</b>	Public Lodging house	P55 B-3
13 Onagawa-aza-Izumisawa Kitakamicho Ishinomaki		0225-25-4144
<b>Guesthouse Urashima-so</b>	Guesthouse	P55 D-1
66 Jusanhama-aza-Ishio Kitakamicho Ishinomaki		0225-66-2473
<b>Guesthouse Kotaki-so</b>	Guesthouse	P55 D-1
49 Jusanhama-aza-Kotaki Kitakamicho Ishinomaki		0225-66-2046
<b>Oiwake Onsen hot spring</b>	Ryokan (Japanese inn)	P55 A-2
1 Onagawa-aza-Omine Kitakamicho Ishinomaki		0225-67-3209



## Oshika Area

<b>Japanese Restaurant &amp; Guesthouse Meguro</b>	Guesthouse	P56 B-3
2-1 Kanto Kobuchihama Ishinomaki		0225-46-2515
<b>Kamome-so</b>	Guesthouse	P56 C-1
16-2 Gobaisawa Yoriisohama Ishinomaki		0225-48-2121
<b>Guesthouse Sakai</b>	Hotel	P56 C-4
1-7 Manjishita Ayukawahama Ishinomaki		0225-45-2515
<b>Guesthouse Atago-so</b>	Guesthouse	P56 B-3
14-4 Kanto Kobuchihama Ishinomaki		0225-46-2075
<b>Guesthouse Ayukawa-so</b>	Guesthouse	P56 C-4
5 Kurosaki Ayukawahama Ishinomaki		0225-45-2039
<b>Guesthouse Ushiroyama-so</b>	Guesthouse	P56 B-3
16-4 Ushiroyama Kyubunhama Ishinomaki		0225-46-2337
<b>Guesthouse Taihei-so</b>	Guesthouse	P56 C-5
29-1 Kurosaki Ayukawahama Ishinomaki		0225-45-2754
<b>Guesthouse Minami-so</b>	Guesthouse	P56 C-4
3 Mamanoue Ayukawahama Ishinomaki		0225-45-2501
<b>Guesthouse Minoru-so</b>	Guesthouse	P56 C-4
1-401 Kurosaki Ayukawahama Ishinomaki		0225-45-2016
<b>Guesthouse Yoriiso-so</b>	Guesthouse	P56 C-1
32 Gobaisawa Yoriisohama Ishinomaki		0225-48-2316
<b>Guesthouse Atami-so</b>	Guesthouse	P56 C-4
1-23 Kurosaki Ayukawahama Ishinomaki		0225-45-2227
<b>Koganeyama Shrine Sanshuden</b>	Public Lodging House	P56 D-4
5 Kinkasan Ayukawahama Ishinomaki		0225-45-2301
<b>Umi no Ie Ushioei Beach House</b>	Guesthouse	P56 B-5
107-52 Kamisorizaka Aijihama Ishinomaki		0225-44-3008
<b>Kimura Ryokan</b>	Ryokan (Japanese inn)	P56 B-5
58 Aji Aijihama Ishinomaki		0225-49-2052
<b>Shiomi-so</b>	Guesthouse	P56 B-5
107-32 Kamisorizaka Aijihama Ishinomaki		0225-49-2205
<b>B&amp;B Seikou Udoku</b>	Guesthouse	P56 B-5
107-40 Kamisorizaka Aijihama Ishinomaki		0225-49-2726
<b>Guesthouse Masaki-so</b>	Guesthouse	P56 B-5
26 Ogane Futawatashihama Ishinomaki		0225-49-2425
<b>Tashiro Island Guesthouse Fujiya</b>	Guesthouse	P56 A-4
115 Tashirohama-aza-Nitoda Ishinomaki		0225-98-2338
<b>Guesthouse Marine Life</b>	Guesthouse	P56 A-4
38 Tashirohama-aza-Nitoda Ishinomaki		0225-21-4122





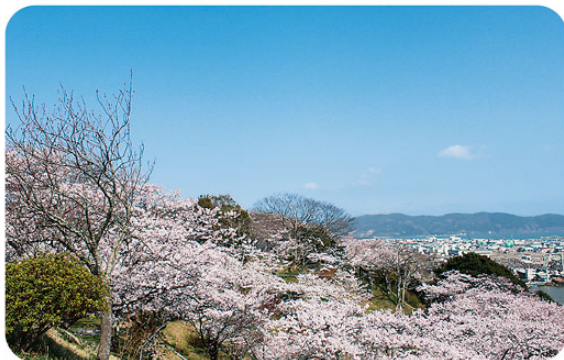
# Event Calendar

## Cherry Blossoms in Hiyoriyama Park

Mid to late April

Location: Hiyoriyama Park, Hiyorigaoka 2-chome Ishinomaki  
☎0225-95-1111 (Ishinomaki City Tourism Division)

One of the most popular spots in Ishinomaki for 'sakura' cherry blossom viewing, Hiyoriyama Park is at its best for 2 weeks from mid April. There are about 400 trees of various varieties, including the well-known Yoshino. Towards the end of the season, the Gioiko variety is worth a look with its distinctive pale green blooms



## Sant Juan Festival

Late May

Location: Sant Juan Museum  
☎0225-24-2210

The major festival of spring, this event celebrates the completion of the full-sized replica Sant Juan Bautista galleon currently moored at the Sant Juan Museum. The ship was officially launched on May 22nd, and the festival serves as a way to publicize the ship and its surrounding facilities, as well as being a good venue for various groups to get together and show off their activities



## Ishinomaki Kawabiraki Festival

July 31st, August 1st yearly

Location: Central Ishinomaki  
☎0225-22-0145  
(Ishinomaki Chamber of Commerce & Industry)

Ishinomaki's biggest festival commemorates the engineer Magobei Kawamura, who by the order of Lord Masamune Date in the 17th century re-routed the rivers around Ishinomaki to protect the city from flooding. The current festival has run for over 90 years and now includes memorial events for victims of the 2011 tsunami (lanterns floated down the river). The following day sees the streets of central Ishinomaki awash with music, street stalls, marching bands & parades, with lots of fireworks in the evening



## Wabuchi Summer Festival

August 15th yearly

Location: 'Kanan Mizube no Gakko' Riverside  
☎0225-72-2114

7,000 lanterns give this festival a fairytale atmosphere, together with artistic performances, food stalls and fireworks, all combining to give you a great time!



## Ogatsu Sea-urchin Festival

Late June

Location: Ogatsu Tanakoyagai shopping area  
☎0225-62-3161  
(Ishinomaki Kahoku Commerce & Industry Association)

The main event may be the sale of delicious sea-urchin at rockbottom prices, but there are also stalls serving local food made of sea-urchin & other seasonal ingredients



## Dragon Dance of Dedication

Last Saturday of July

Location: Kinkasan Koganeyama Shrine  
☎0225-45-2301

The 20m long dragon weighing 100kg is controlled by 10 people, and almost feels like a living animal, accompanied by drums, percussion & trumpets



4 April

## Kanan Kashima Bayashi Dashi Festival

Third Sunday of April

Location: Hirobuchi  
☎0225-86-3663 (Kanan Public Hall)  
☎0225-93-1910 (Lifelong Learning Division)



5 May

## Spring Mangattan Festival

Third Sunday of April

Location: Ishinomaki Mangattan Museum  
☎0225-96-5055



6 June

## Makiyama Ayame (iris) Festival

Late June-early July

☎ Summer purification rite  
Location: Makiyama Hitsujiisaki Shrine  
☎0225-23-2815



7 July

## Mangattan Festival

late July

Location: Ishinomaki Mangattan Museum  
☎0225-96-5055

☎ Aji Shirahama Beach  
☎ Ogatsu Arahama Beach  
☎ Kitakami Shirahama Beach  
☎ Watanoha Beach

8 August

## Summer Festival in Kahoku

early August

Location: Kahoku Media Ship & Big Bang Community Center  
☎0225-62-3161

## Tricolore Music Festival

late August

Location: Central Ishinomaki  
☎0225-23-2109



## ★ Monou Fureai Festival Haneko Dance Festival in Monou

2nd Saturday in September

Location: Monou Uetateyama Park

Monou Fureai Festival Executive Committee

☎0225-76-2111 (Monou Office Community Promotion Section)

☎0225-76-3315 (Kanan Monou Commerce & Industry Association Monou Division)

The Haneko Dance, which prays for a good harvest, is relatively rare in Japan for a folk dance because of its rhythmical style. It is made up three sections, up tempo, mid tempo & slow. About 1,000 people dance it, and anyone is free to join in if they feel like it. The finale includes a firework display that lights up the summer night in a riot of color



## ★ Tour de Tohoku Mid September

Tour De Tohoku Executive Committee

HP: <http://tourdetohoku.yahoo.co.jp/>

This event has been held in September since 2013 to contribute to the reconstruction effort after the 2011 tsunami. It is held not so much as a competition, but as a fun event for anyone to take part in, as they travel around the tsunami-affected area at their own pace to see for themselves how things are progressing. Stopping off at the many rest stations gives you a chance to meet the locals and try some local dishes. Why not give it a try?!



## ★ Kinkasan Koganeyama Shrine Shinroku Tsunokiri (horn-cutting) Gyoji Festival

Early October

Location: Kinkasan Koganeyama Shrine

☎0225-45-2301

Shinto festival in which 30 male deer in the shrine grounds are held down by hunters and have their antlers sheared off, in a strong show of courage. A rare event that can only be seen here and in Nara

## ★ Ishinomaki Tairyo (great catch) Festival

3rd Sunday in October

Location: Ishinomaki Uoichiba Wholesale Fish Market

☎0225-95-1111 (Ishinomaki City Fishery Division)

Ishinomaki has some of the most flourishing fishing industry in the country, and at this festival you can find a wealth of seafood and processed marine items at knockdown prices. There are lots of other events, such as auctions, fish-catching games and tuna-filleting displays (with free tasting!), something for all the family!



Sant Juan Museum

## ★ Fantasy Festival (facility kept open after dark)

Late December

Location: Sant Juan Museum ☎0225-24-2210

Staying open after dark for an extra 3 hours to 19:30, take in the beautiful sight of the Sant Juan Bautista ship illuminated by 10,000 lights, as well as various other events



## ★ Mangattan New Year Event

Early January

Location: Ishinomaki Mangattan Museum ☎0225-96-5055

Lots of New Year-themed events including 'mochi-tsuki' ricecake pounding (given out free afterwards) & kite-flying, a great family event!



## ★ Ometsuki (Fire Prevention Festival)

Late January

Location: Naburi, Ogatsu ☎0225-57-3052 (Ogatsu Public Hall)

Designated an important intangible folk culture asset of Miyagi, this festival has its roots in prayers for reconstruction of the area after the Naburi area of Ogatsu was ravaged by fire in 1781. In addition to prayers for safety & prosperity, humorous skits are performed by the locals



9 September

★ Kinkasan Koganeyama Shrine Yearly Grand Festival  
Location: Kinkasan Koganeyama Shrine  
☎0225-45-2301

10 October

★ Kahoku Produce Festival

Location: Kahoku Media Ship & Big Bang Community Center  
☎0225-62-2114

★ Matatabi Performance Tohoku

Location: Monou Center ☎0225-76-3315

★ Onagawa Hoin Kagura Shinto music & dance

Location: Kitakami, Onagawa ☎0225-67-2541

11 November

★ Kanan Festival

Location: Yugakukan ☎0225-72-2114  
(Kanan Festival Executive Committee/Kanan Office Community Promotion Section)

★ Mangattan Culture Festival

Location: Ishinomaki Mangattan Museum ☎0225-96-5055

★ Ishinomaki Oyster Festival

Location: Ishinomaki Fishery Promotion Center  
☎0225-90-2131 (Ishinomaki Oyster Branding Committee)

12 December

★ Nikkori Toshi no Ichi (year-end happy market)

Location: Kitakami Junior High School Gym ☎0225-67-2114

★ Mangattan Christmas

Location: Ishinomaki Mangattan Museum ☎0225-96-5055

★ Kinkasan Koganeyama Shrine Purification & Seeing out the Old Year

Location: Kinkasan Koganeyama Shrine ☎0225-45-2301

1 January

★ Sant Juan Illumination Tree

Location: Sant Juan Park 16:30~20:30  
The Sant Juan Bautista ship is decorated with 10,000 lights

★ Sant Juan Museum usually closes at 16:30 except for the above special day  
Illuminations can be viewed from the park area even after the museum has closed



# City Center Map

- Key**
- Hotel/lodging
  - Tourist/public facility
  - Restaurant
  - Taxi company
  - Cycle station
  - Cycles for rental
  - Miyagi Free Wi-Fi

Look!



**Hiroyama Park**  
This is a popular place to view the coastal area of central Ishinomaki that was badly damaged by the tsunami & is being converted into a memorial park. It also has statues of the famous personages Matsuo Basso and Magobei Kawamura



MAP P51 D-3

Taste! Buy!



**Ishinomaki Kawamachi Community Center Kawabei**  
General tourist information for the whole area

MAP P50 F-5

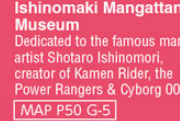


**Ishinomaki Genki Ichiba**  
1st floor sales area selling fresh seafood, local produce & gifts, and 2nd floor food court offering a variety of local food

MAP P50 F-5

5mins

Play!



**Ishinomaki Mangattan Museum**

Dedicated to the famous manga artist Shotaro Ishinomori, creator of Kamen Rider, the Power Rangers & Cyborg 009

MAP P50 G-5

20mins

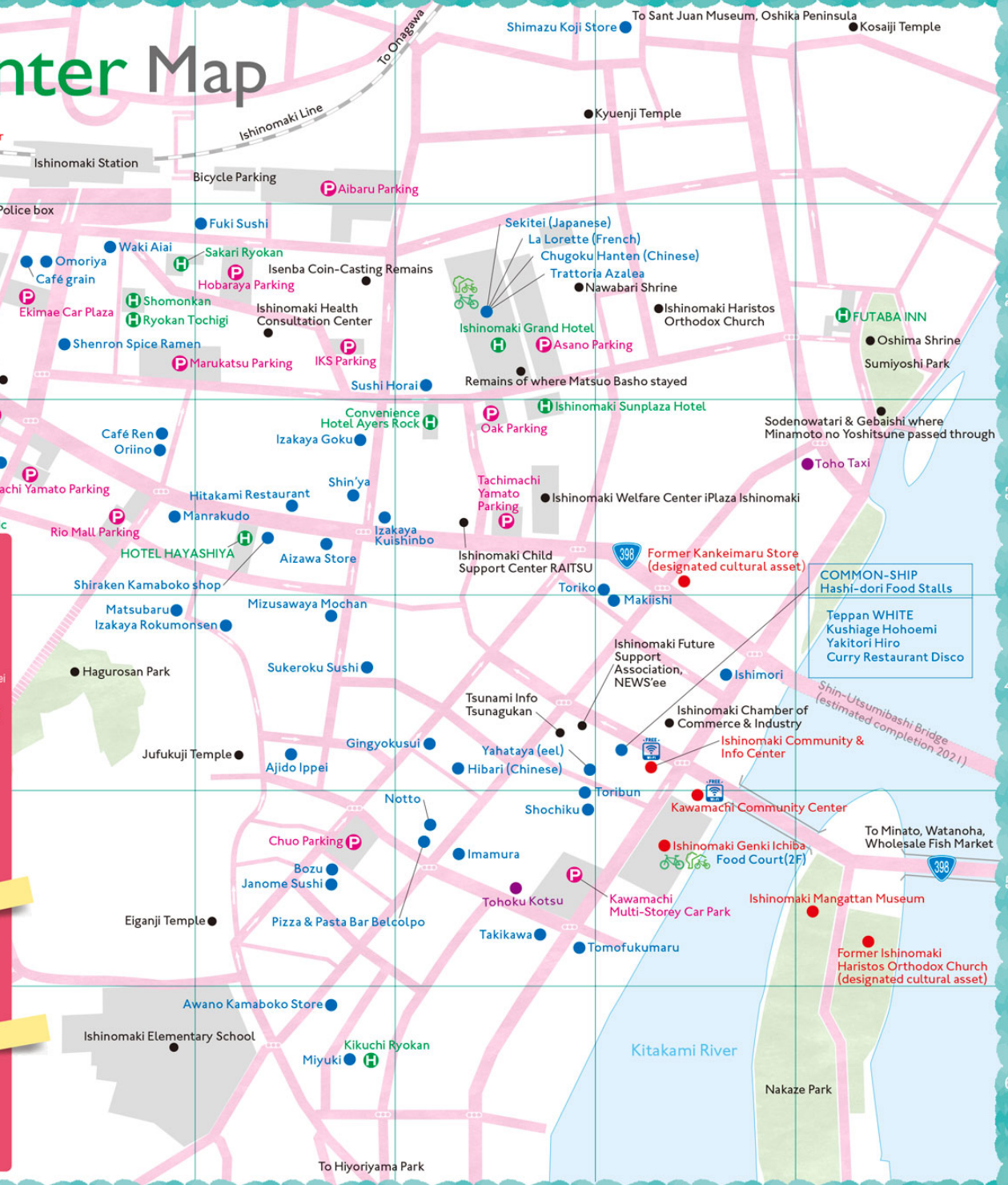
Learn!



**Sant Juan Museum**

Introducing the historic 17th century voyage to Europe of the samurai Tsunenaga Hasekura and the locally built ship he used, the Sant Juan Bautista

MAP P52 E-4



## Ishinomaki Historical Tour



**Shigeoyoshi Shrine**  
Enshrines Magobei Kawamura who greatly helped Ishinomaki with his river engineering work, ordered by Lord Masamune Date in the 17th century

MAP P51 B-3

15mins

### Oshima Shrine (Sumiyoshi Park)

Visited by the haiku poet Matsuo Basso, & location of the Makiishi rock in the Kitakami River which may be the origin of the name Ishinomaki

MAP P50 G-2

1min



### Sodenowatari & Gebaishi

Where the famous samurai warrior & military commander Minamoto no Yoshitsune is said to have passed through

MAP P50 G-3

5mins

### Ishinomaki Haristos Orthodox Church

Haristos is the Greek name for Christ. Visitors wanting to view the inside of this church in a peaceful residential area should contact the office next to the church

MAP P50 F-2

3mins

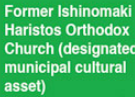


### Nawabari Shrine

This shrine contains measuring ropes used by Magobei Kawamura in his construction work on the Kitakami River

MAP P50 E-2

10mins



**Former Ishinomaki Haristos Orthodox Church** (designated municipal cultural asset)

A lovely western-style piece of architecture on Nakaze island in the middle of the Kitakami River

MAP P50 G-5

15mins



### Saikoji Temple (Kiheita Sanada's monument)

A descendant of Yukimura Sanada, Sanada was an active samurai in the late Edo Period who lived in Ishinomaki after retiring. A stone monument to him can be found here

MAP P51 D-3

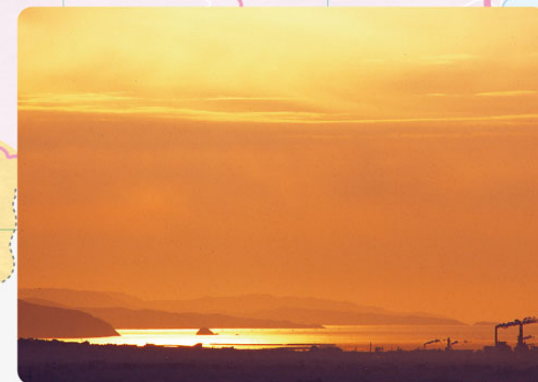


# Central Ishinomaki

- Key**
- Hotel/lodging
  - Tourist/public facility
  - Restaurant
  - Taxi company
  - Cycle station
  - Cycles for rental



Cherry blossoms on Makiyama



Morning at Ishinomaki Bay



Mangoku-ura Bay



Sunset over the Oshika Peninsula  
(Kitsunozaki-hama)

**Nippon Paper Group Ishinomaki Mill**

※Mill site is private land. Please view from nearby public roads, while being careful of the many trucks and other vehicles that come and go. Strictly no entry into the Mill site.



Kanan Area

Monou Area

Kahoku Area



Blue skies in Kanan



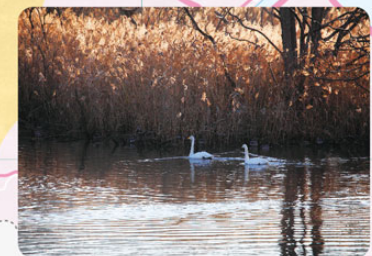
Sunrise over Monou



Monou in the morning



Saragai countryside



Swans on the Oppa River



Sunrise over Oppa Bay



Poplar trees on the Kitakami River

- Key
- Hotel/lodging
  - Tourist/public facility
  - Restaurant, café
  - Taxi company
  - Cycle station
  - Cycles for rental



Sunrise over Kanan from Asahiya

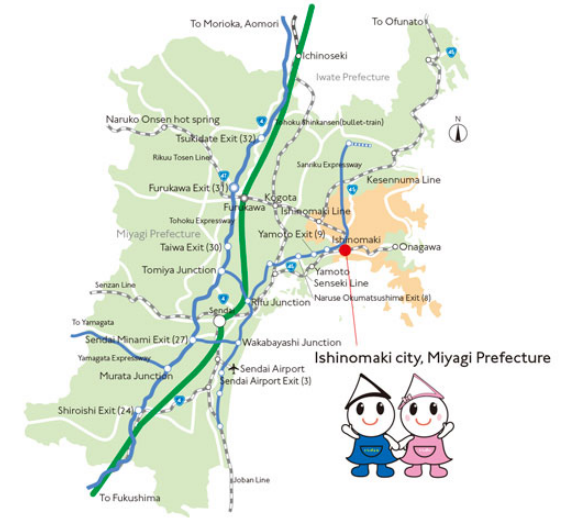




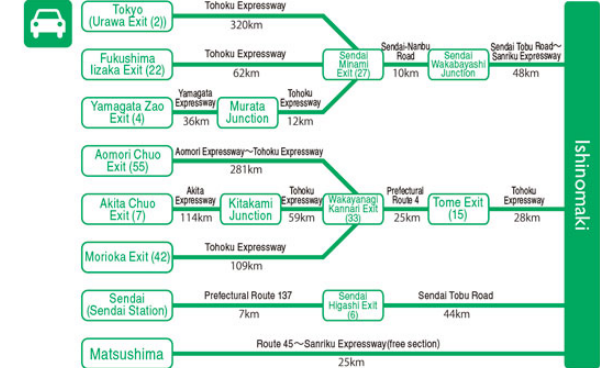




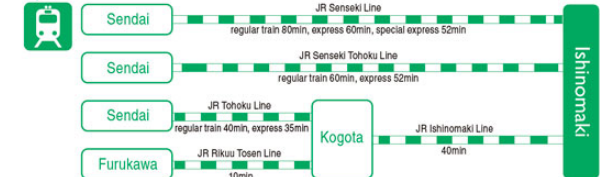
# Ishinomaki Full Area Map



## By Car



## By Train



## By Bus





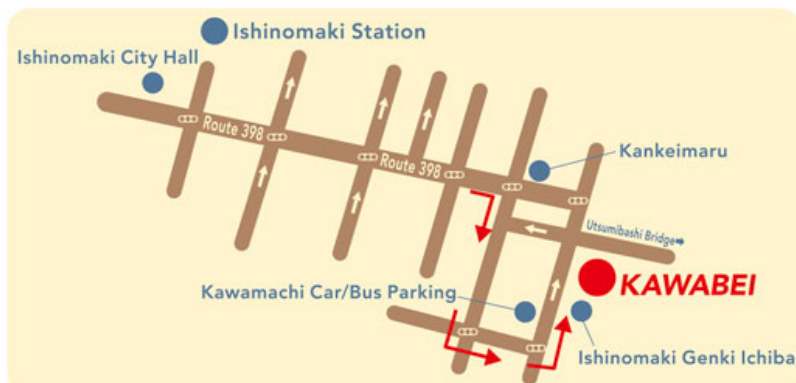
# Your journey around Ishinomaki starts here!

We are waiting for you with all the information you need for sightseeing



**Information Space**  
Providing tourist & product information for Ishinomaki

**Library**  
Japanese books on Ishinomaki's history and food culture



## KAWAMACHI Car/Bus Parking

**Capacity: 219 CARS, OPEN 24HRS**

Bus parking for up to 5 vehicles (reservation only) 9:00 ~ 21:00

**1 hour FREE parking** (free parking period varies by season)

Parking charge after free period: ¥ 150/ 30min

※ Free tickets for other car parks cannot be used here

## Ishinomaki Genki Ichiba

2-11-11 Chuo Ishinomaki

☎ 0225-98-5539

**Open : 1F Sales area**

9:00 ~ 19:00

**2F Food court**

11:00 ~ 20:00

(last order 19:30)

**Closed : OPEN EVERY DAY**

※ Please check for hours at New Year, August o-bon season, national holidays

## KAWABEI

2-11-21 Chuo Ishinomaki

☎ 0225-93-6448

**Open : 9:00 ~ 21:00**

**Closed : 12/29 ~ 1/3**

TOILET FOR WHEELCHAIRS

NURSINGROOM AVAILABLE

DIAPER CHANGING TABLE



Issued by: Ishinomaki Tourism Association ☎ 0225-93-6448

Editing • Design: Suzuki Printing Design Section Printing • Binding: Suzuki Printing Co., Ltd.

**PRINTED IN ISHINOMAKI**