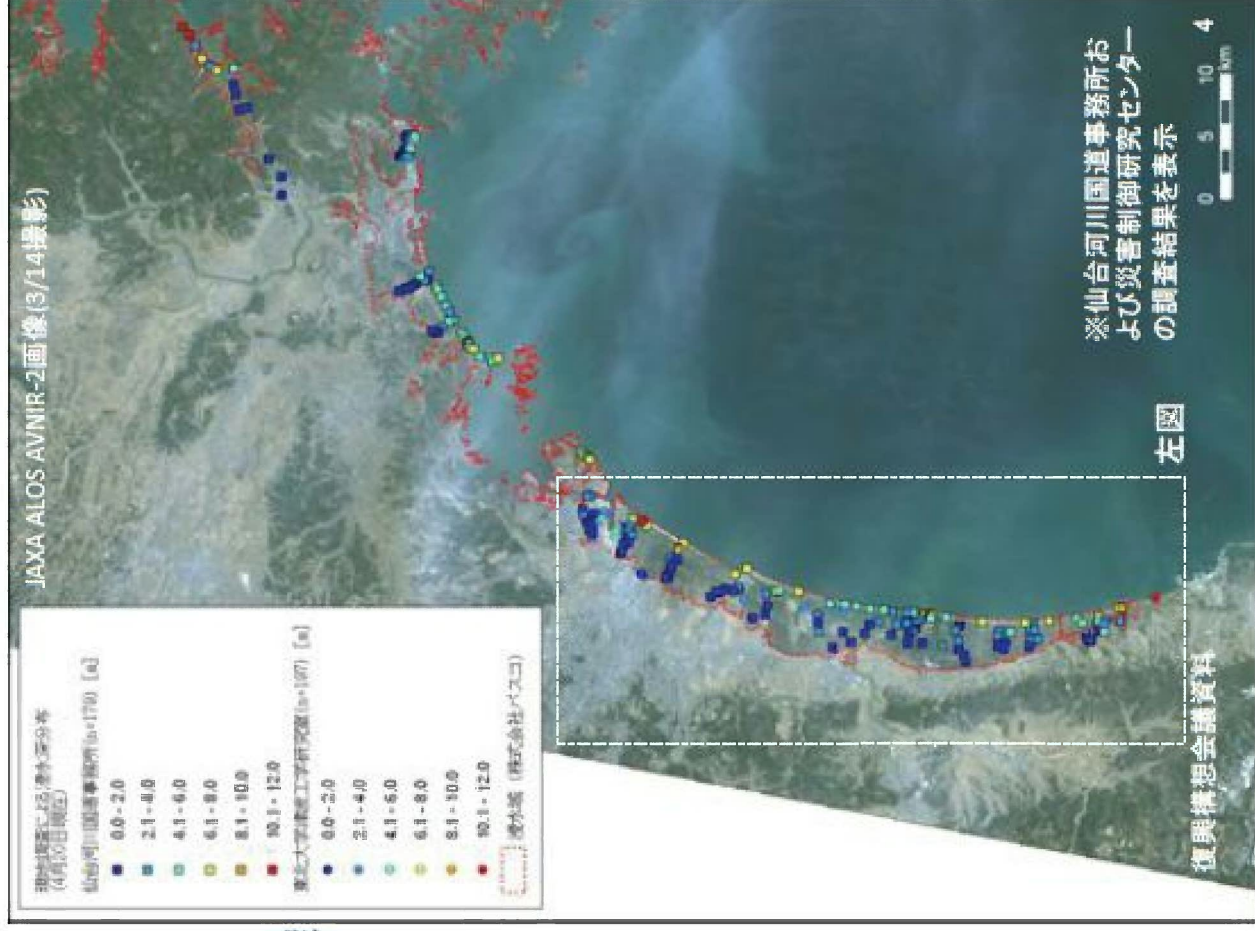
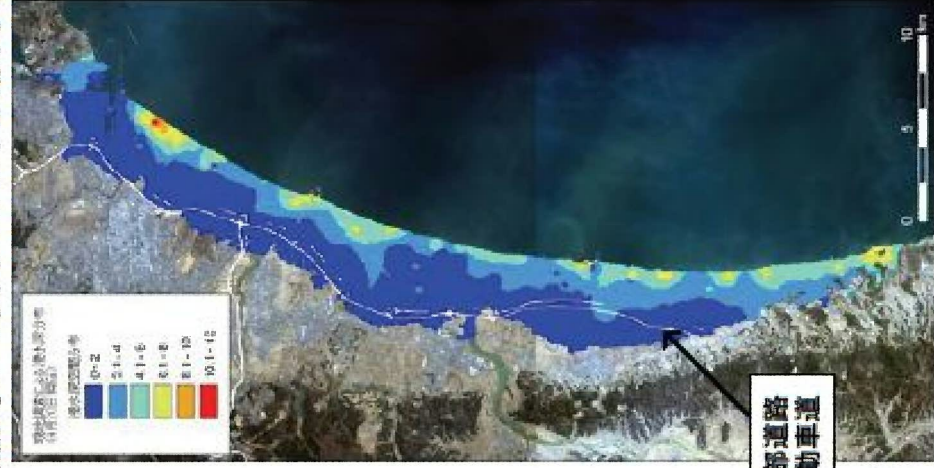


現地調査結果

津波浸水深(4月20日)

空間補間して表示した津波浸水深



津波被害の特徴

Tsunami Disasters

- 広域浸水 Huge amount of inundation (443km²)+ destructive wave force
- 直接間接 Floating of debris, ships, cars and tanks
- 火災, 塩水浸水 Fires by attack of ships, and sea water
- 地形変化 Change of topography and Geometry due to erosion and deposition



Ships and fire at Kesennuma



Destruction on community at Sendai